

Repair Guide

TRV SLIM & TRV XT XL



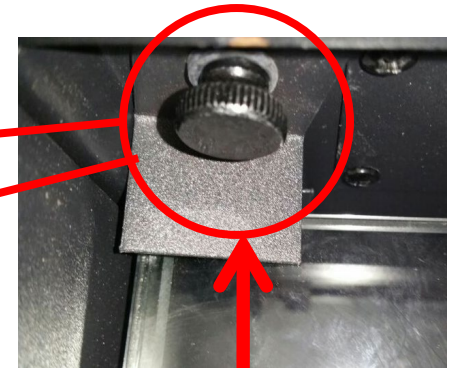
Amantii
Electric Fireplaces

Content

- [How to replace the LED light](#)
- [How to replace the flicker motor](#)
- [How to replace the heating element](#)
- [How to replace the PCB board](#)
- [How to replace the signal receiver](#)
- [How to replace the canopy light](#)

Replacing the LED light

Step 1 Replace ember bed LED light

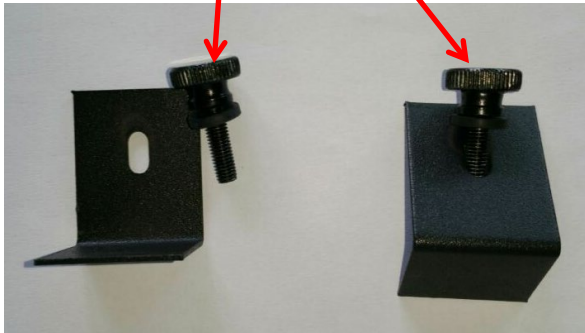


Unscrew the
screw

Unscrew one screw on both sides and then to
remove the front glass.



After two screws are removed, the front glass will fall out.



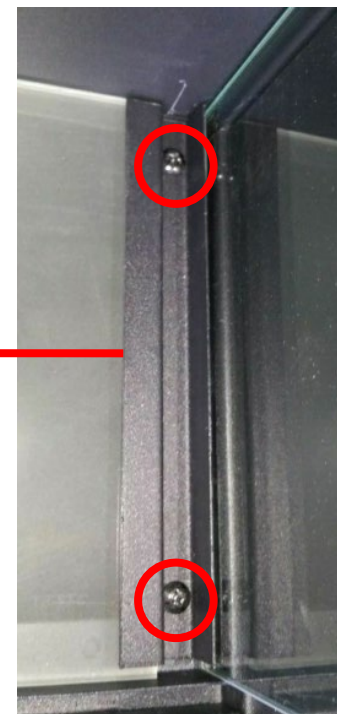
Front glass

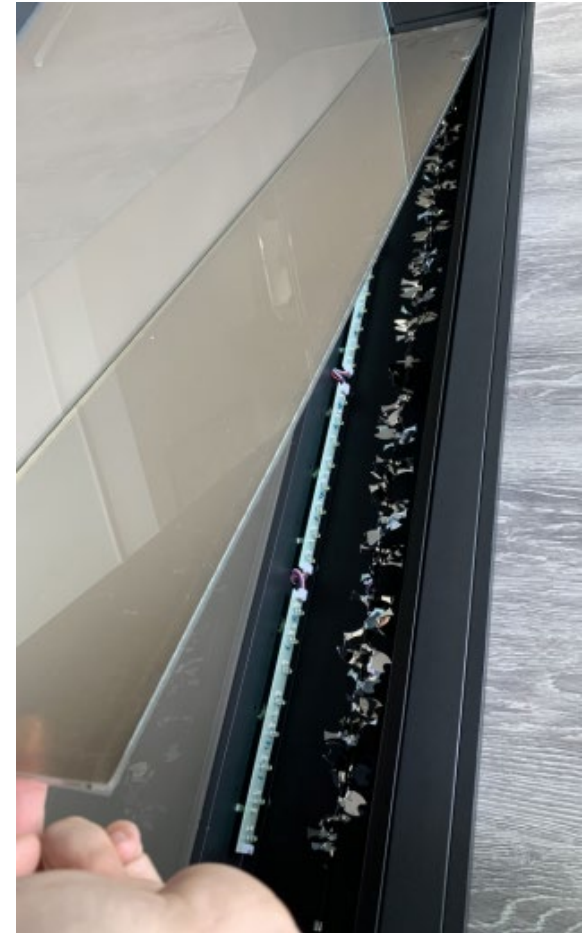
Step 2



Unscrew two screws on both sides and then to take off two bars and the ember bed glass panel

Zoomed view





After the screws and fending bars are removed, you can take off the ember bed glass panel and one black long steel bar with it.

Step 3



After the ember bed glass panel is removed, now you can replace the LED light for ember bed effect. (Replace flame light see STEP 4)



Zoomed view

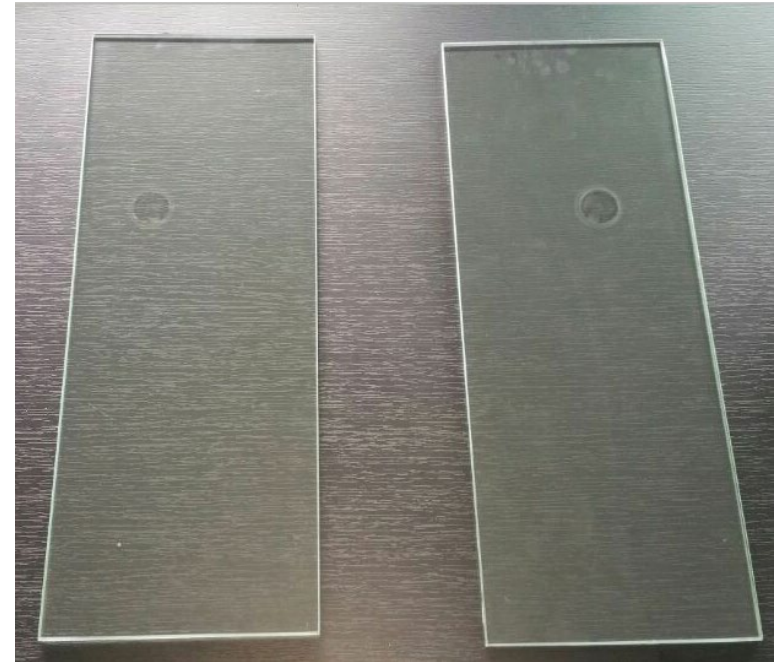
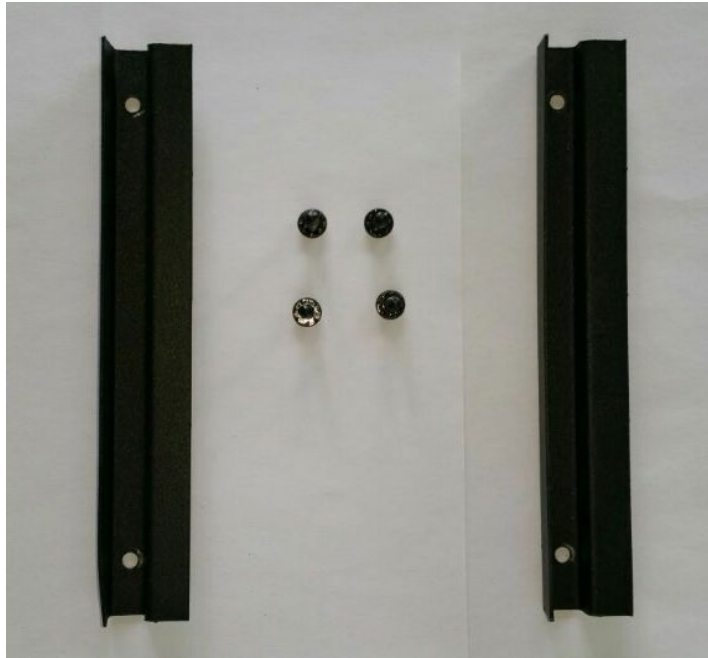
Zoomed view



Step 4

Unscrew 2 screws on the left and right hand side of the fireplace (where the arrows marked) to take off the fending bars. After the bars have been taken out, you can remove two side glass panels.





Screws and fending bars

Side glass panels

After screws and fending bars are removed,
now you can take off the side glass panels.



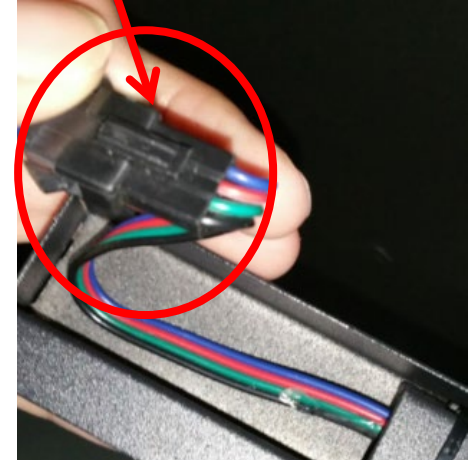
Step 5

Unscrew the screws on the left and right sides from the front glass fending bar to take it off the fireplace



Step 6

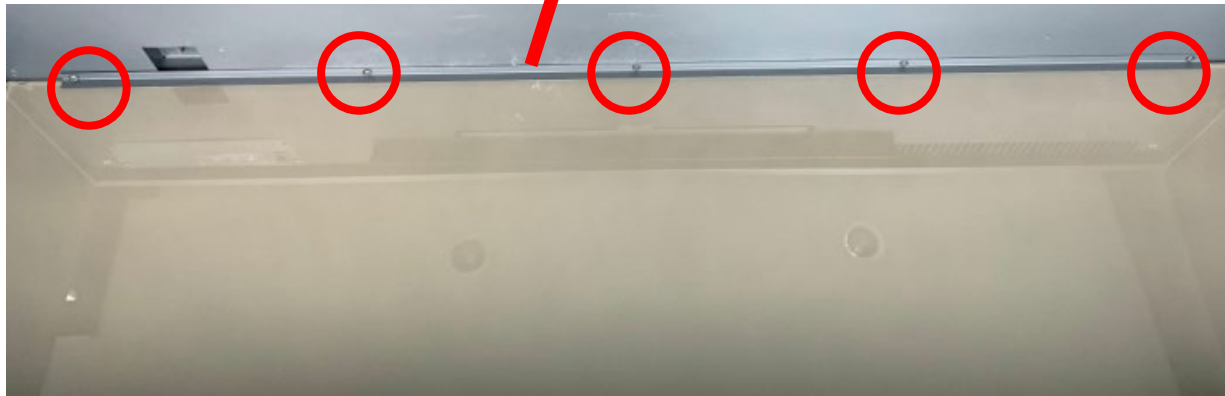
Unscrew 3 screws then unplug to take off the canopy light from the fireplace.

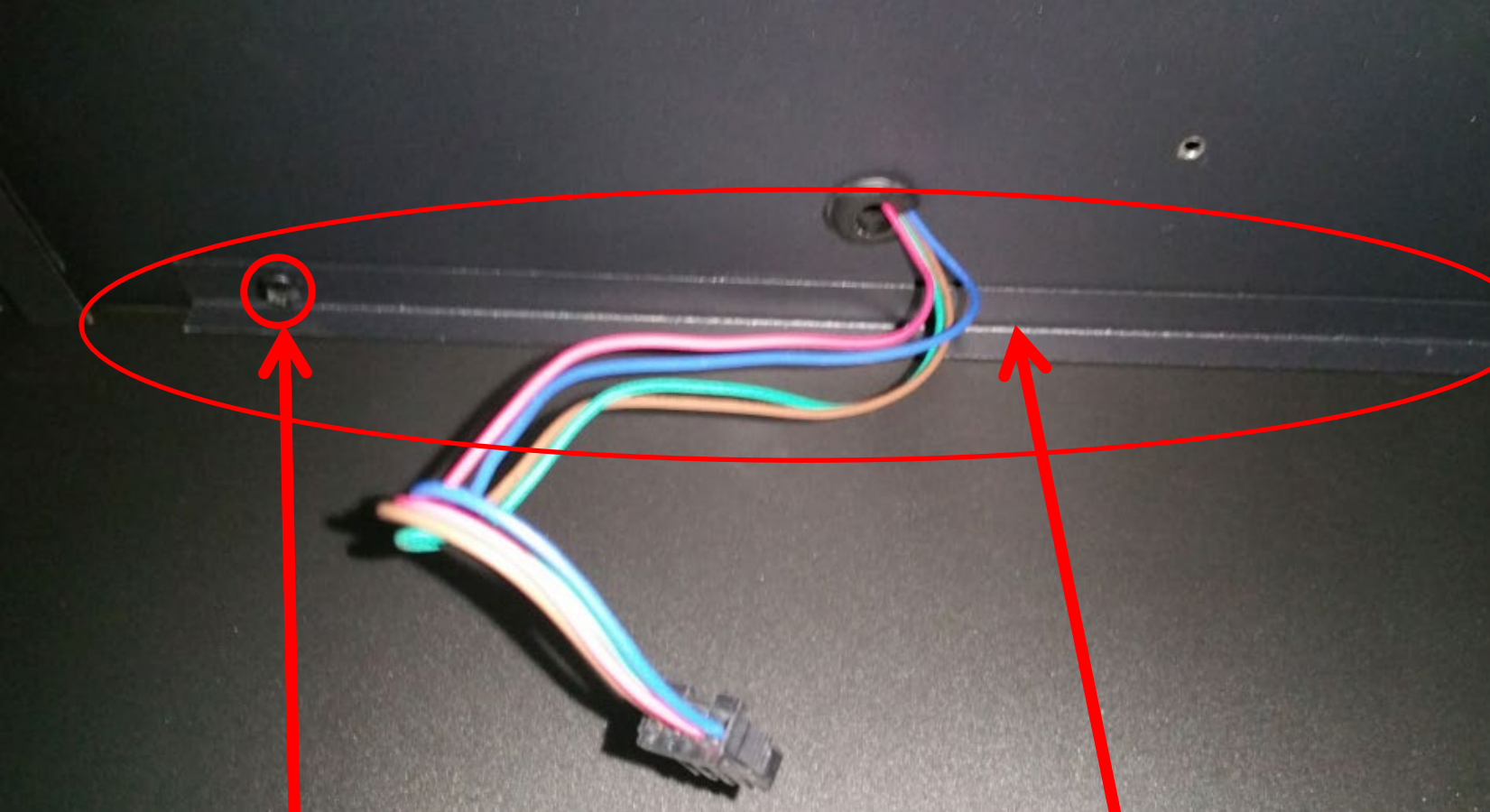




Step7

Unscrew the screws and take off the back glass fending bar.
(Zoomed picture in the next page)





Screws that fix
the fending bar

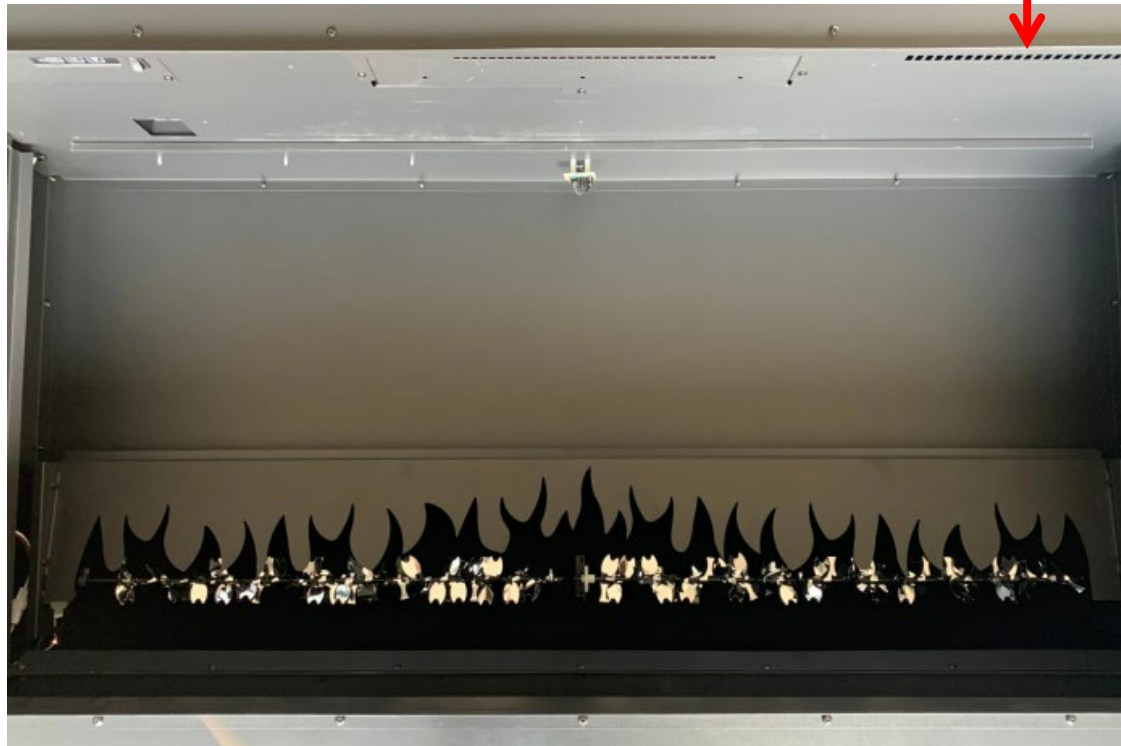
Fending bar



Back glass Fending bar

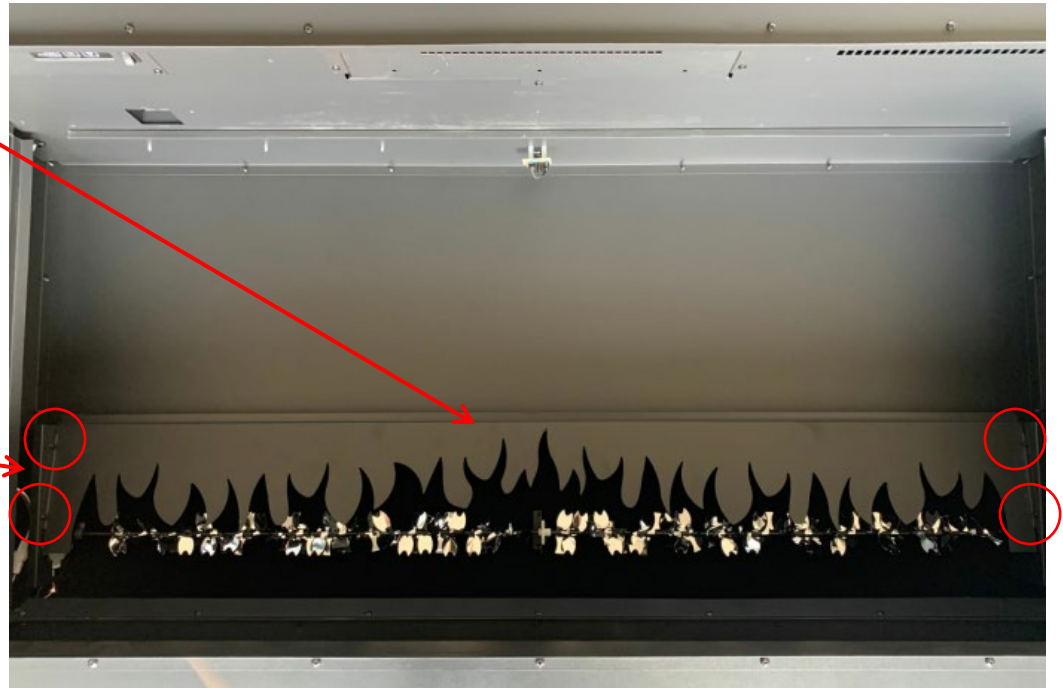
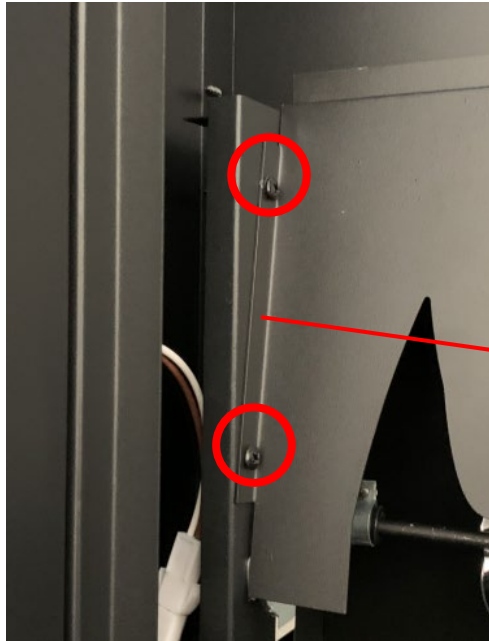
Step 8

After fending bar is removed, now you can take off the back glass panel. You come to here.



Step 9

Unscrew 2 screws each on left and right side to take off the flame stencil. And you can see the LED strips for flame. Replace those don't work.



Replacing the flicker motor

Please follow steps 1 to 2 in Replacing the LED light to arrive here

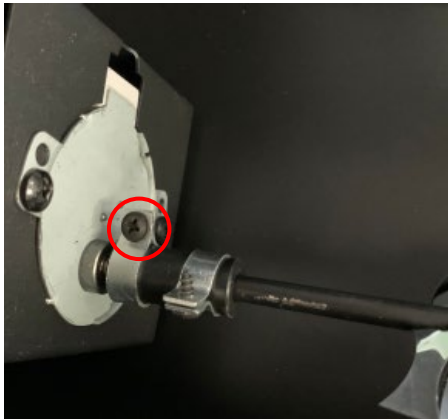


Replacing the flicker motor for ember bed effect

The flicker motor for ember bed effect is beneath the ember bed glass panel.

Step 1

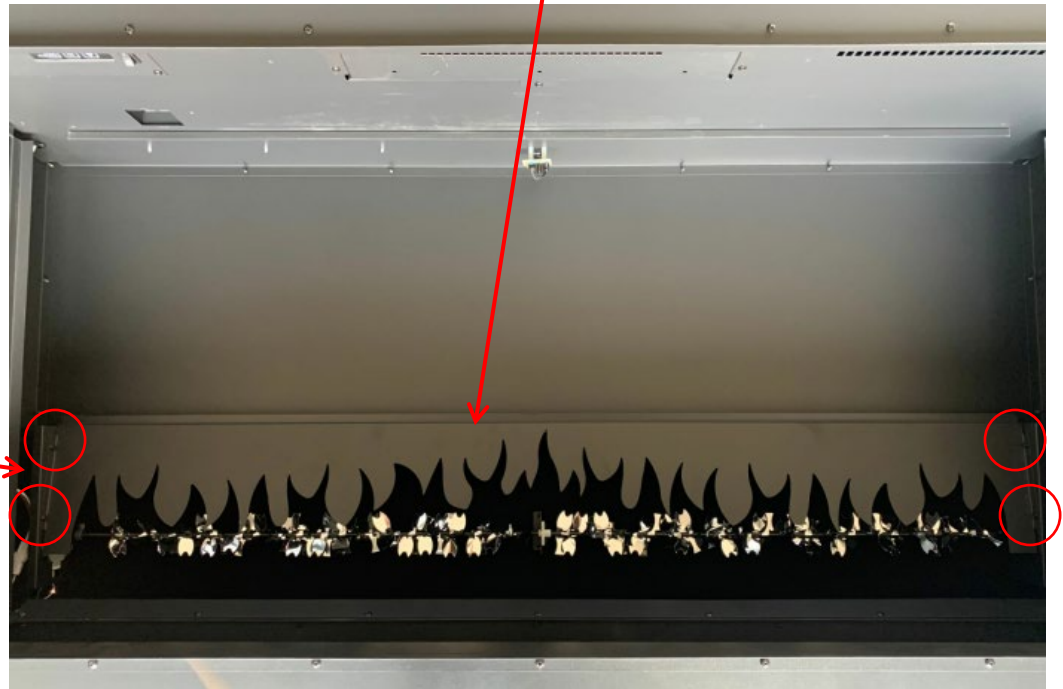
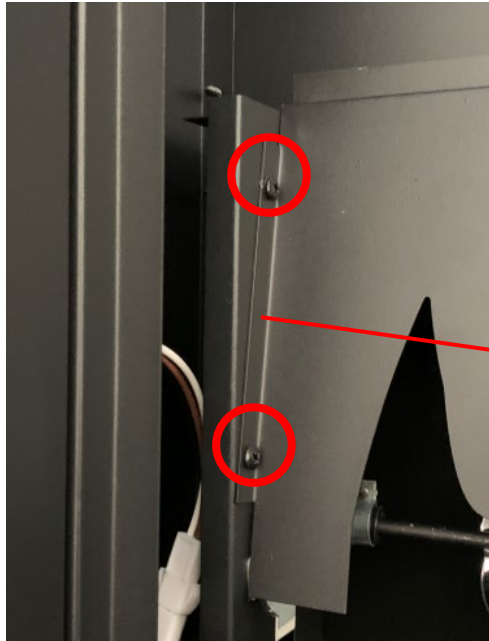
Unscrew the screw and then disconnect the flicker rod from the motor



Unscrew the screws to take off the motor from the fireplace

Please follow steps 1 to 9 from Replacing the LED light

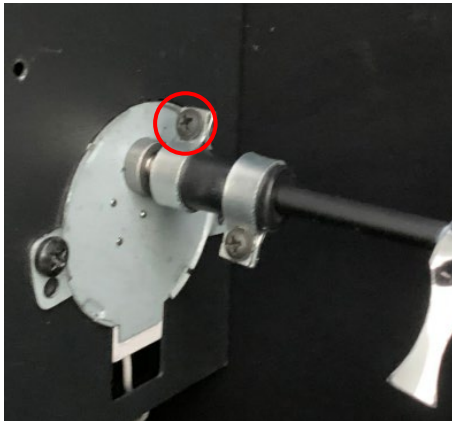
Unscrew 2 screws on left and right side to take off the flame stencil. And you can see the flame motor.



The flicker motor for flame effect is behind the flame stencil.

Step 1

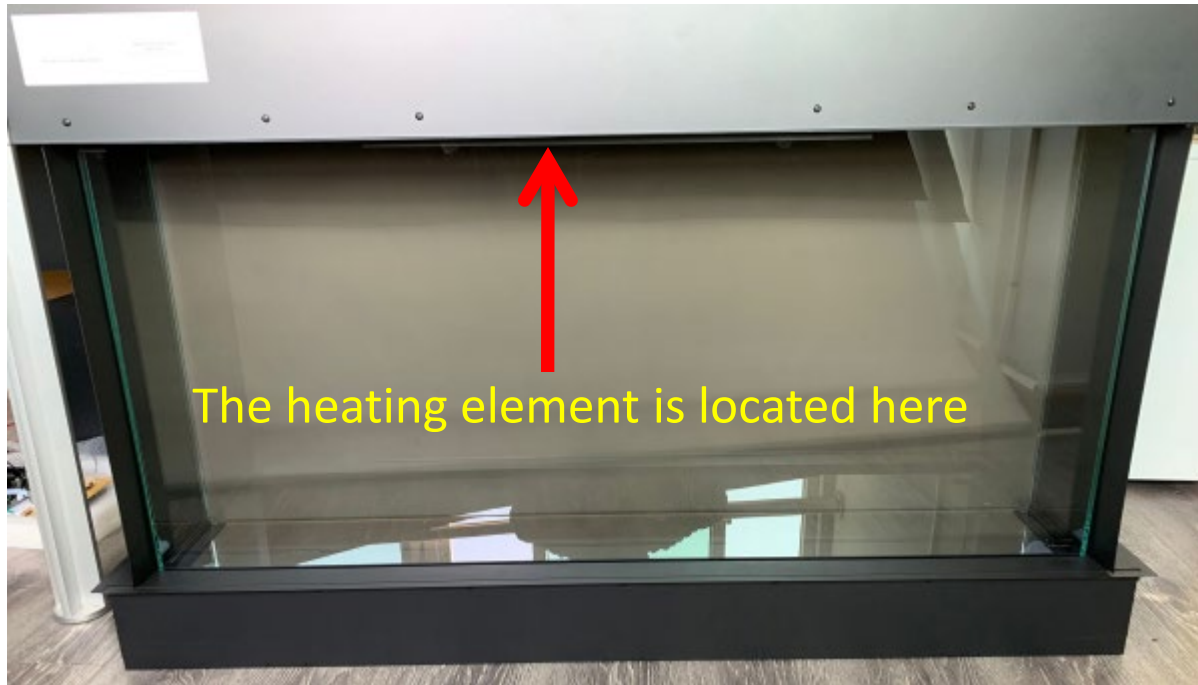
Unscrew the screw and then disconnect the flicker rod from the motor



Unscrew the screws to take off the motor from the fireplace

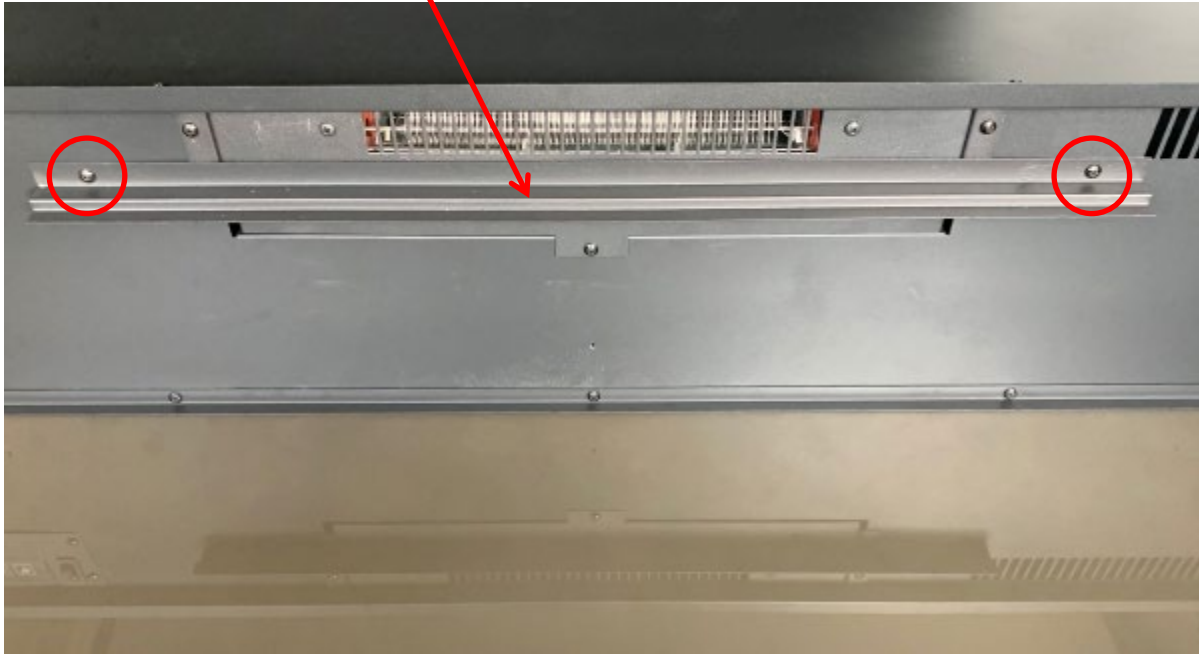
Replacing the heating element

Please follow Step 1 in replacing LED light, you come to here



Step 1

Unscrew the screws on the left and right sides from the front glass fending bar to take it off the fireplace



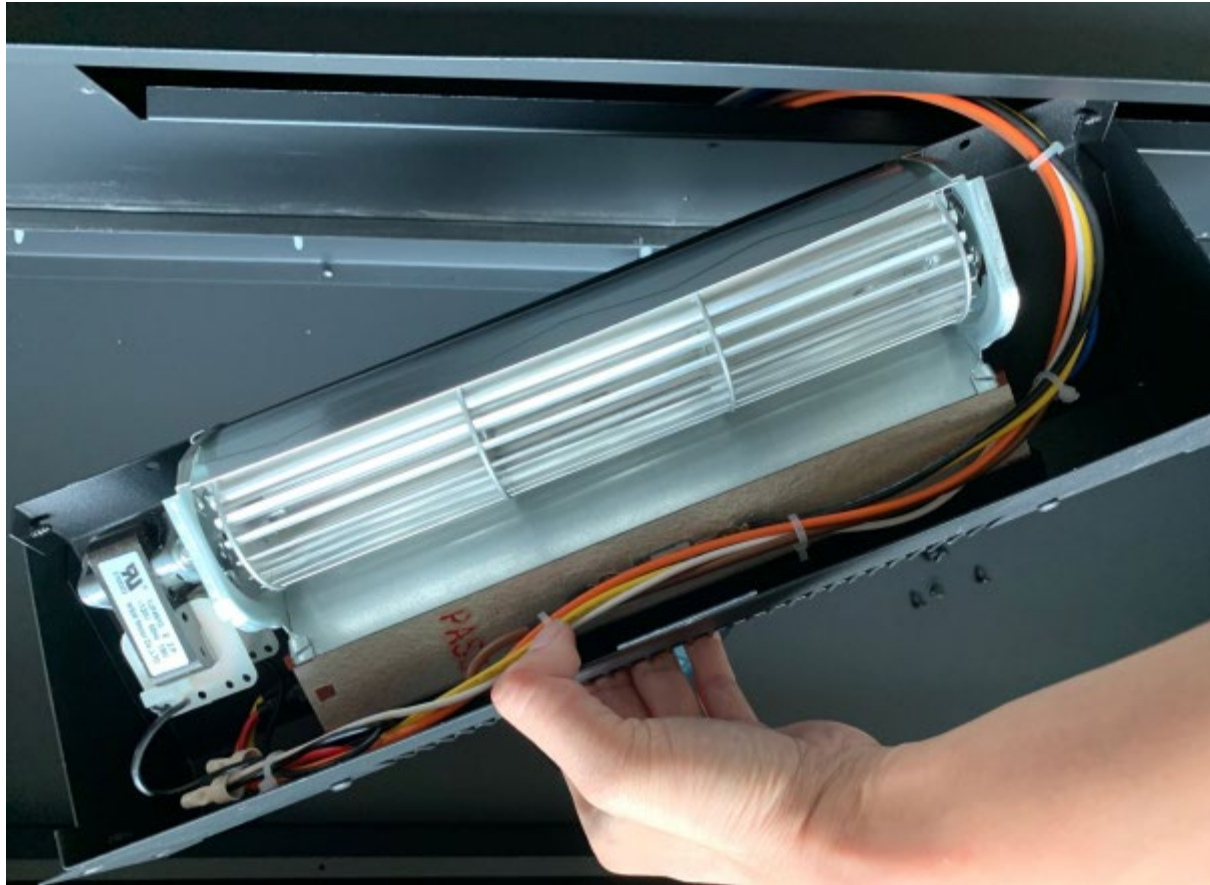
Step 2

Unscrew 5 screws, then pull the heating element set down.



Step 3

Dismantle the heating element.





Unscrew 4 screws and
you can separate the
heater from the
heating element set.



Step 4

Unplug and you can replace the heater.



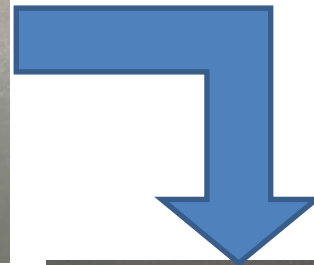
Replacing the PCB board

Please follow step 1 and 2 in Replacing the LED light to arrive here



Step 1

Unscrew 4 screws, then pull the control board down and the PCB board is fixed on it



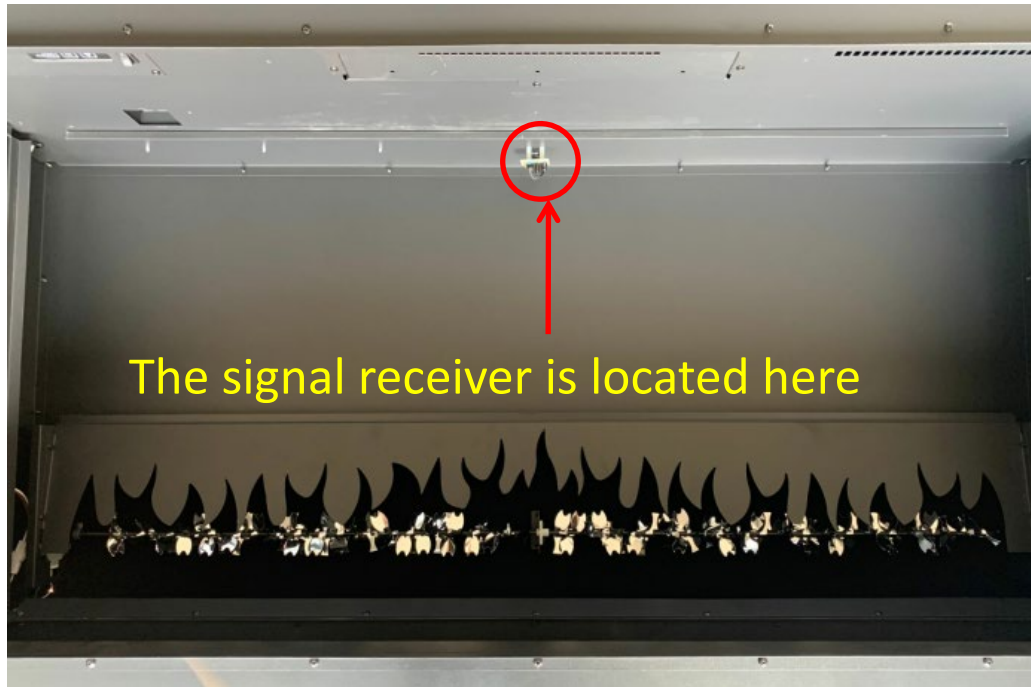
Step 2

Unplug, unscrew the 5 screws circled in red and replace the PCB board.



Replacing the signal receiver

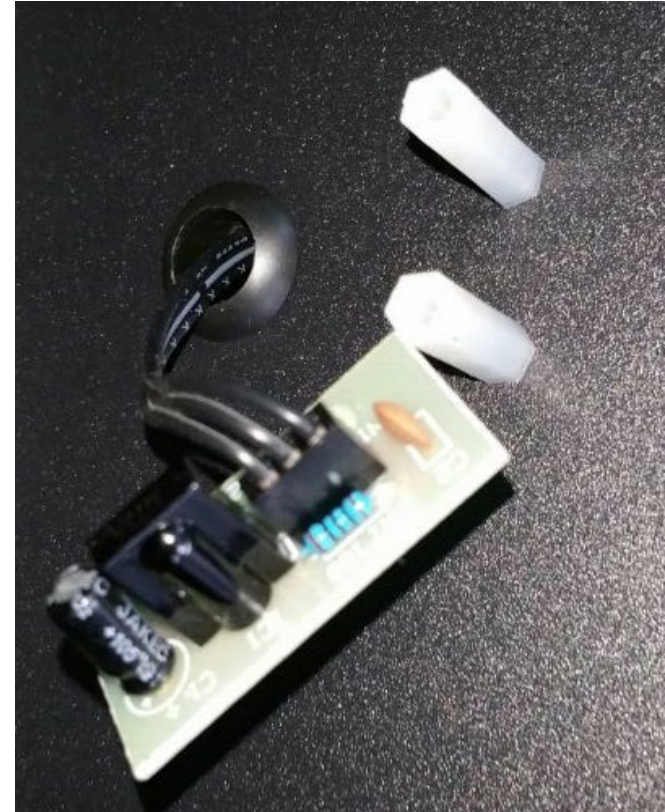
Please follow steps 1 thru 8 in Replacing the LED light to arrive here



Step 1

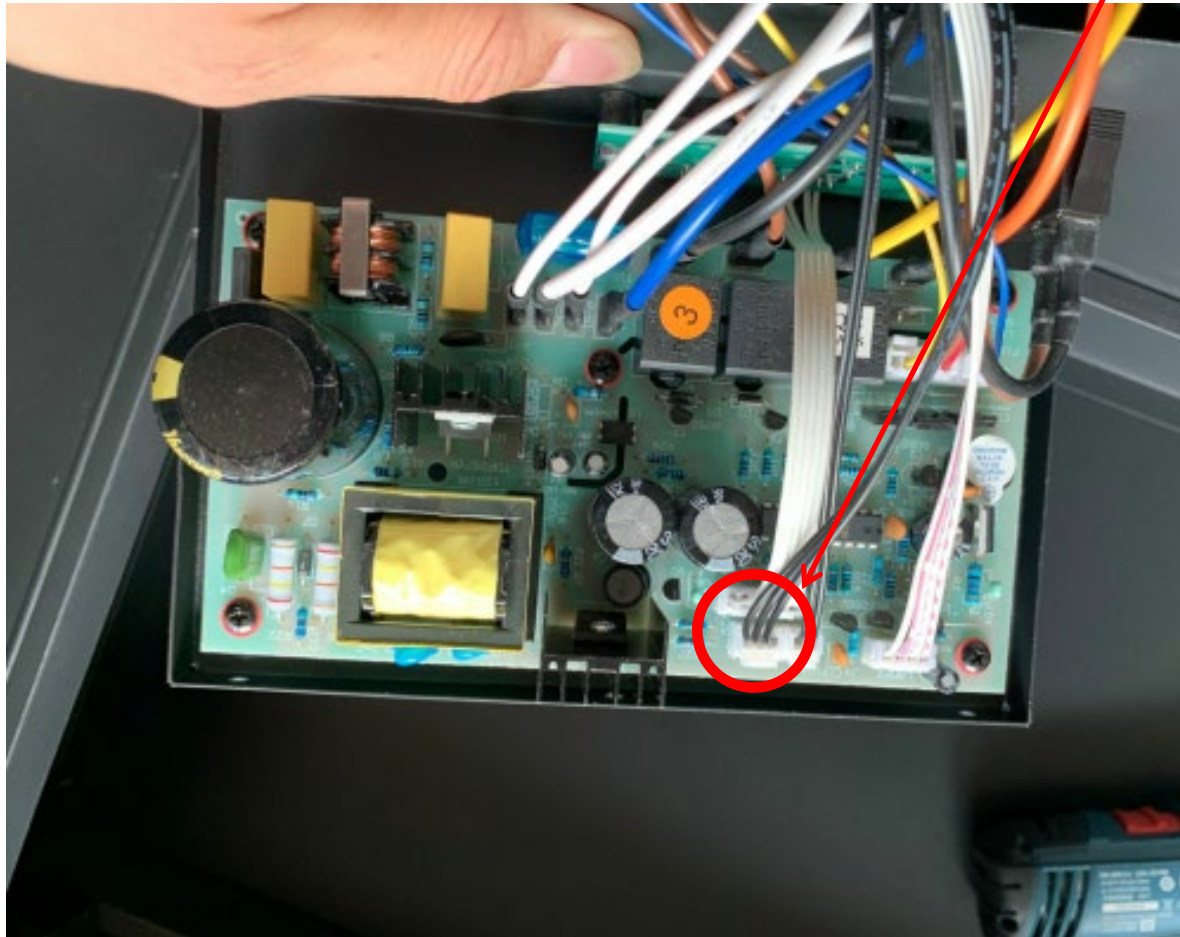


Unscrew 2 screws



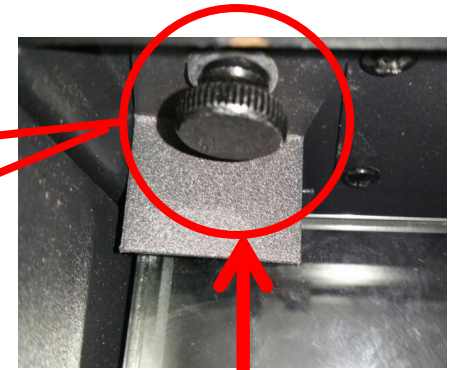
Step 2

Please follow step 1 in Replacing the PCB board. Unplug and signal receiver from the PCB board and replace a new receiver.



Replacing the canopy light

Step 1



Unscrew the
screw

Unscrew one screw on both sides and then to
remove the front glass.



Step 2

Unscrew 3 screws then unplug to replace the top light.

