

BRICK REFRACTORY KIT
BRICK32CR, BRICK32TB, BRICK36CR, BRICK36TB
BRICK42CR, BRICK42TB
Models: QUARTZ32, QUARTZ36, QUARTZ42
Installation Instructions



Leave this manual with party responsible for use and operation.

DANGER



HOT GLASS WILL CAUSE BURNS.

DO NOT TOUCH GLASS UNTIL COOLED.

NEVER ALLOW CHILDREN TO TOUCH GLASS.

A barrier designed to reduce the risk of burns from the hot viewing glass is provided with this appliance and shall be installed for the protection of children and other at-risk individuals.

CAUTION! Do not install damaged components.

CAUTION! Risk of Cuts or Abrasions. Wear protective gloves and safety glasses during installation.

NOTICE: Handle refractory panels with care. Refractory may chip or crack if dropped or impacted.

TOOLS

Screw gun equipped with 1/4 in. socket or 1/4 in. wrench or socket

KIT COMPONENTS

- (1) Left Refractory Panel
- (1) Right Refractory Panel
- (1) Rear Refractory Panel
- (2) Side Refractory Brackets
(self-tapping screws included)
- (1) Exhaust Baffle (QUARTZ32 & QUARTZ36 Only)
- (1) Extended Glass Baffle (QUARTZ32 & QUARTZ36 Only-self-tapping screws included)

Note: The exhaust baffle and extended glass baffle are not required to be replaced if using SLP-FLEX7 series (7 inch flexible) venting.

WARNING! Risk of Overheating! The extended glass and exhaust baffle must be installed. Elevated glass temperatures could cause glass breakage.

Installation Instructions

1. Remove glass and log set. Retain to reinstall once brick kit is installed.
2. Remove the two screws that secure the base pan to the burner assembly and remove base pan from appliance. See Figure 1.

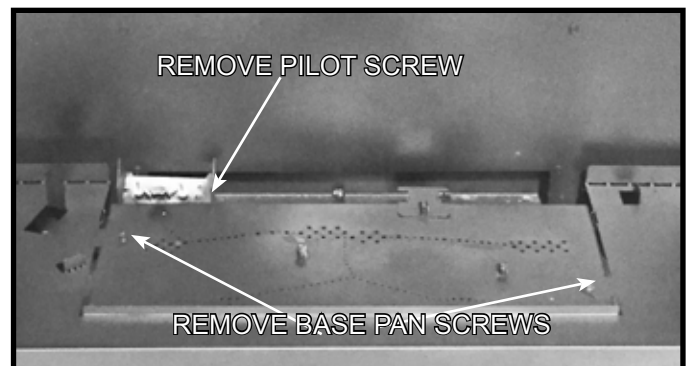


Figure 1. Remove Screws - Generic Burner Shown

3. Remove the screw that secures the pilot assembly to the burner. See Figure 1. Retain screw for future use. Gently move the pilot assembly upward about two inches.
4. Remove two lower screws behind the burner. Retain those screws also for future use. See Figure 2.

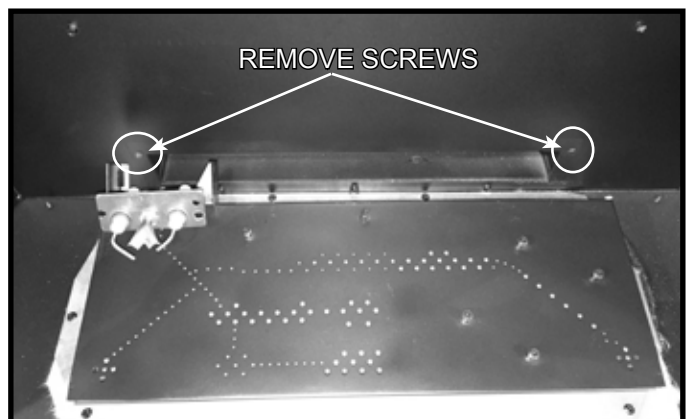


Figure 2. Remove Screws - Generic Burner Shown

5. Install the rear refractory panel bracket by installing with two screws. Reattach pilot assembly to burner with one screw. Gently pull the pilot tube and pilot wires down, grasping them from beneath the firebox. See Figure 3.

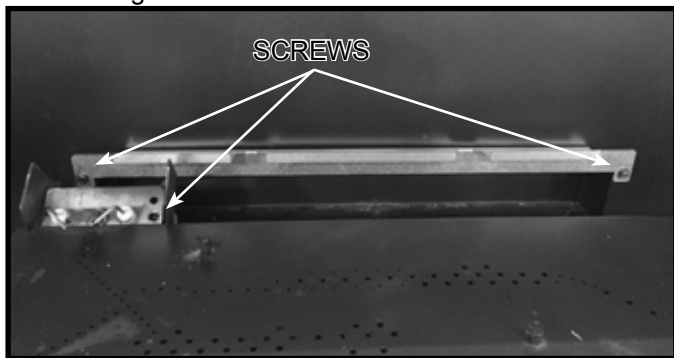


Figure 3. Rear Refractory Panel Bracket Installed

6. **(QUARTZ32 & QUARTZ36 Only):** Remove existing exhaust baffle by removing two wing nuts. Retain the wing nuts for use in Step 11. See Figure 4.

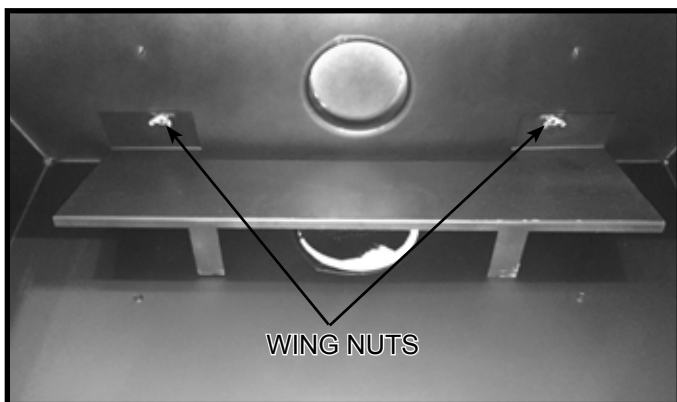


Figure 4. Remove Existing Factory-Installed Exhaust Baffle

7. Install the rear refractory panel by placing it on the rear refractory bracket. Ensure panel is pushed down so that it rests on the rear bracket. Gently push the panel back to engage the screw heads. See Figure 5.



Figure 5. Rear Refractory Panel Installed

8. Reinstall base pan, previously removed in Step 2, and secure to burner assembly with retained screws.
9. Install right refractory panel by sliding refractory panel in from the front side as shown in Figure 6. Repeat this step to install the left refractory panel.



Figure 6. Install Refractory Panel (Right Side Shown)

10. Locate and bend side refractory brackets as shown in Figure 7. Install each bracket with one self-tapping screw as shown in Figure 8. An outline of the factory-installed glass baffle is shown for reference. Slide the bracket forward until it contacts the firebox front lip.

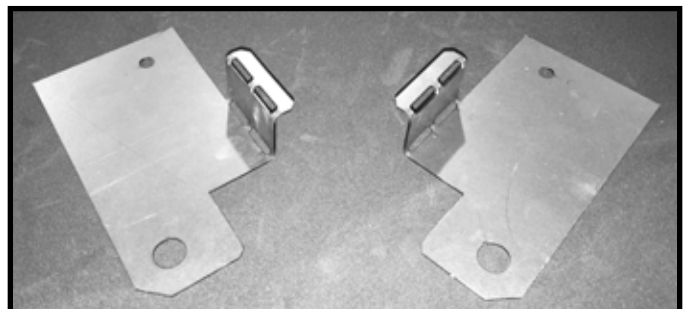


Figure 7. Side Refractory Brackets Bent

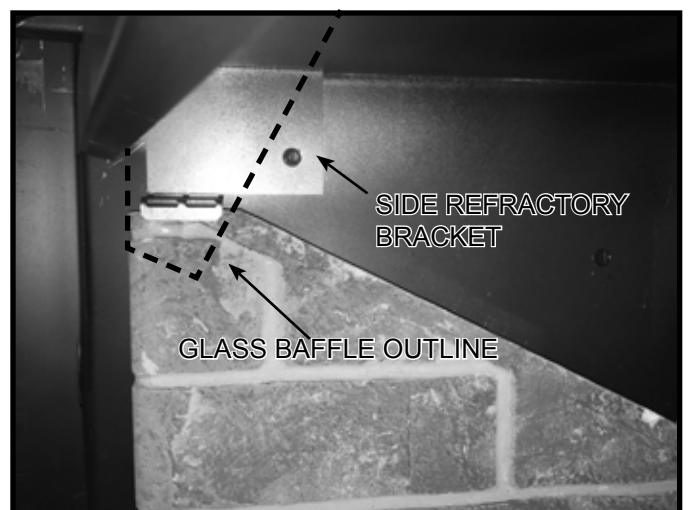


Figure 8. Side Refractory Bracket Installed (Left Side Shown)

WARNING! Risk of Overheating! The extended glass and exhaust baffle must be installed. Elevated glass temperatures could cause glass breakage.

11. **(QUARTZ32 & QUARTZ36 Only):** Install new exhaust baffle included in the kit and secure with two wing nuts retained in Step 6.
12. **(QUARTZ32 & QUARTZ36 Only):** Install the new extended glass baffle, included in the kit, by centering the component over the existing factory-installed glass baffle. Slide it up between the existing glass baffle and top firebox lip until it contacts the firebox top. Secure the extended baffle with two self-tapping screws. See Figure 9.

Note: For future appliance servicing, the extended glass baffle should be removed to allow for efficient access and removal of the refractory liner.

13. Reinstall embers and log set according to the instructions provided in the appliance installation manual.



Figure 9. Extended Glass Baffle Installed
(QUARTZ32 & QUARTZ36 Only)

Please contact your Majestic dealer with any questions or concerns.

For the location of your nearest Majestic dealer, please visit www.majesticproducts.com.

Majestic, a brand of Hearth & Home Technologies
7571 215th Street West, Lakeville, MN 55044
www.majesticproducts.com