

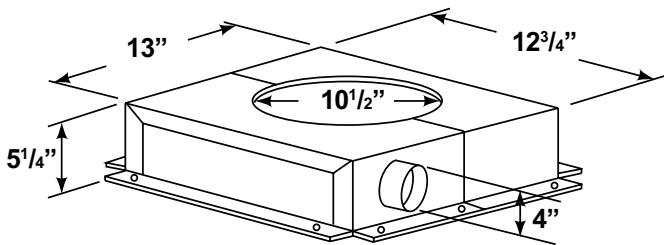


Hearth Technologies Inc.
 20802 Kensington Blvd.
 Lakeville, MN 55044

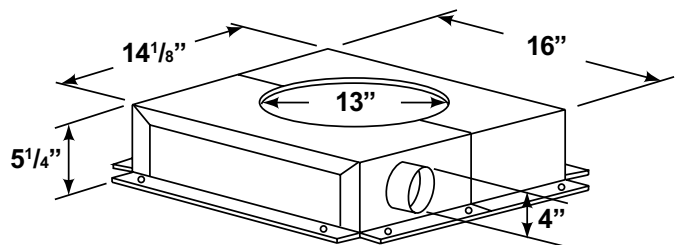
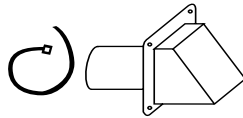
CAK4A CAK5A CAK6A CAK7A CHIMNEY AIR KIT INSTALLATION INSTRUCTIONS

These chimney air kits have been tested and listed to the UL 127 Standard and the ULC S610 Standard for use on the Hearth Technologies Inc. (HTI) Factory-Built Fireplaces by Underwriters Laboratories, Inc.

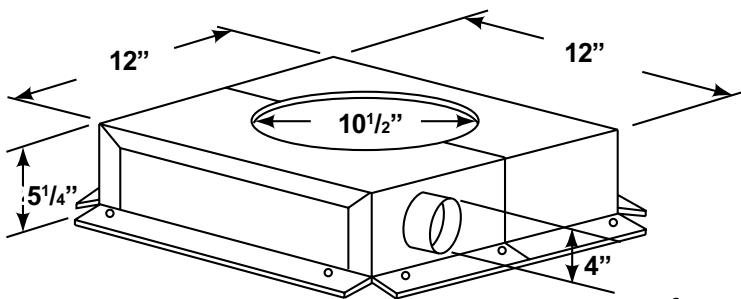
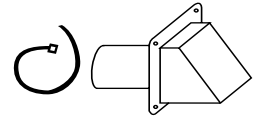
- Description:** You must first verify you have the correct kit for your HTI fireplace. Refer to your Installation Instructions/ Owner's Manual for the correct Chimney Air Kit (CAK) to be used. Each CAK includes a Chimney Air Box Assembly, an outside air inlet Vent Hood with Stucco Flange, [2] wire ties, and a Hardware Package.



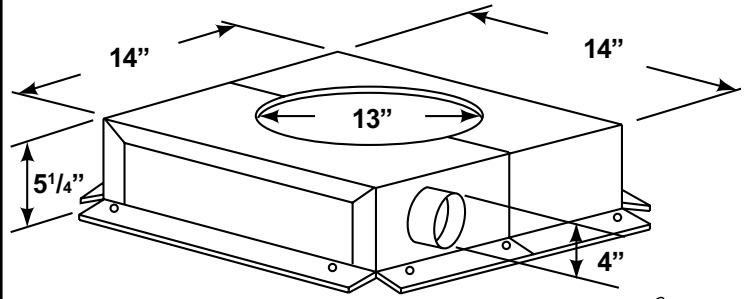
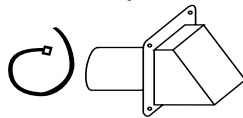
CAK4A



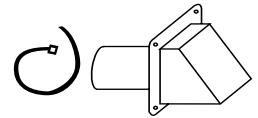
CAK5A



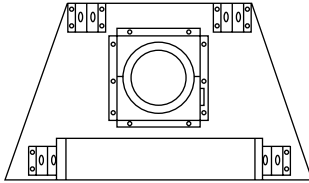
CAK6A



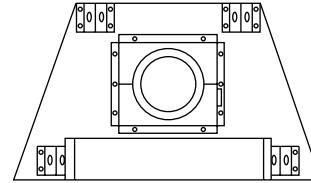
CAK7A



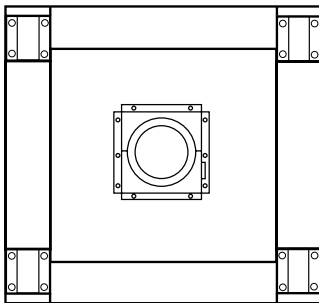
CAK4A



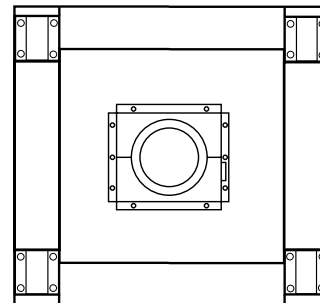
CAK5A



CAK6A



CAK7A



- 2. Installation:** Once the Chimney Pipe is installed, place the box on top of the fireplace around the Chimney Pipe and attach the [2] halves of the CAK together. See the illustrations above. Use the pre-punched holes in the flange as guides and drill 3/32" holes through the fireplace top. Secure the box with the screws provided.
- 3.** Connect a 4" Class 1 duct to the collar on the CAK by using one of the wire ties provided. Route the duct to an outside wall. The inlet Vent Hood must be installed no lower than six [6] feet above ground level so it will not be blocked by drifting snow. If the CAK is installed in a Chase, the inlet Vent Hood must be at least three [3] feet below the Chimney top.
- 4.** Cut a hole through the outside wall for the installation of the duct inlet Vent Hood. A 4-3/4" diameter hole is sufficient. Feed the loose end of the duct through the hole. Attach it to the inlet Vent Hood with the wire tie provided. Push the Vent Hood into the hole and secure it in place.
- 5. Venting Restrictions:** The duct must never be compressed or deformed! Reducing the cross sectional area of the duct will reduce the amount of air flow. When additional ducting is needed, use Class 1 metallic duct material to connect sections of the Class 1 duct referred to in Step 3.