

WARRANTY

Burner:

Grand Canyon Gas Logs burners carry a life time warranty against manufacture defects or breakage as long as the appliance is installed inside and by a professional installer. In the event a defect or breakage occurs a replacement will be available for pick-up from the dealer at which the burner was originally purchased. This warranty is limited to original purchaser only. Indoor burners installed outside carry a (1) year warranty.

Electrical and Valves:

Grand Canyon Gas Logs valves, remotes & receivers carry a (2) year warranty against breakage or defects from date of purchase, by original purchaser, and must be installed by a licensed professional installer. This warranty only covers use with Grand Canyon Gas Logs burners and logs. In the event a defect or breakage occurs a replacement will be available for pick-up from the dealer at which the burner was originally purchased. Batteries are not covered under this warranty. ODS pilot assemblies carry a (1) year warranty.

WARRANTY CARD

Warranty claim

Purchased from (Showroom name) _____
 City _____ State _____
 Day/Month/Year _____
 Model purchased _____

YOUR INFORMATION

Name: _____
 City _____ State _____
 Phone Number _____ Email _____
 Date of install _____

Copy & Mail to:
 Grand Canyon Gas Logs
 3515 E. Atlanta Ave., Phoenix, AZ 85040

Thank you for choosing Grand Canyon Gas Logs,
 we appreciate all our customers and hope you have many years of
 enjoyment of our products.

Take a look at our other products
 from our RPG Brands family of companies

RPG BRANDS

RPG BRANDS FAMILY OF COMPANIES

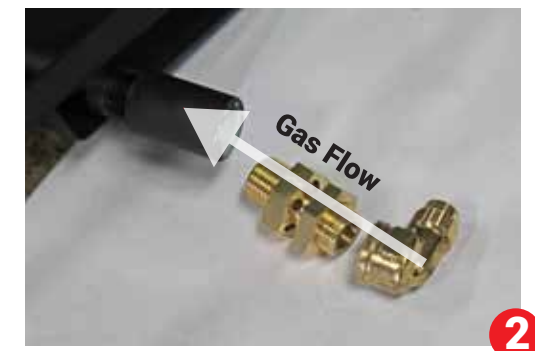


Installation manual on how to convert systems Natural Gas to Liquid Propane

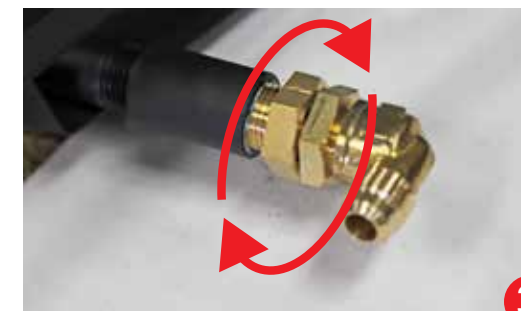
Burner Conversion



1
 Removal of Natural Gas elbow
 and orifice



2
 Installation of LP air mixer
 w/brass fitting



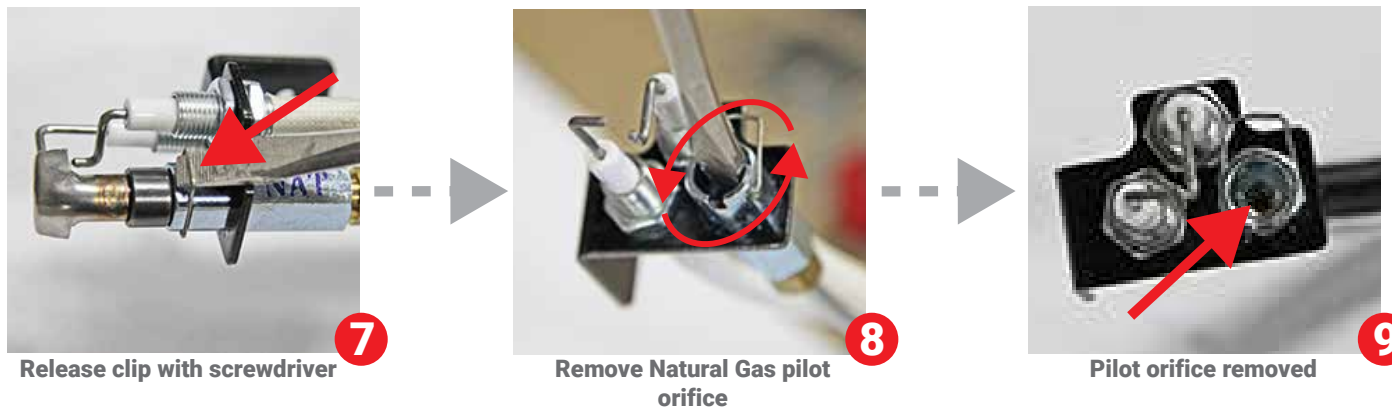
3

Valve System Conversion

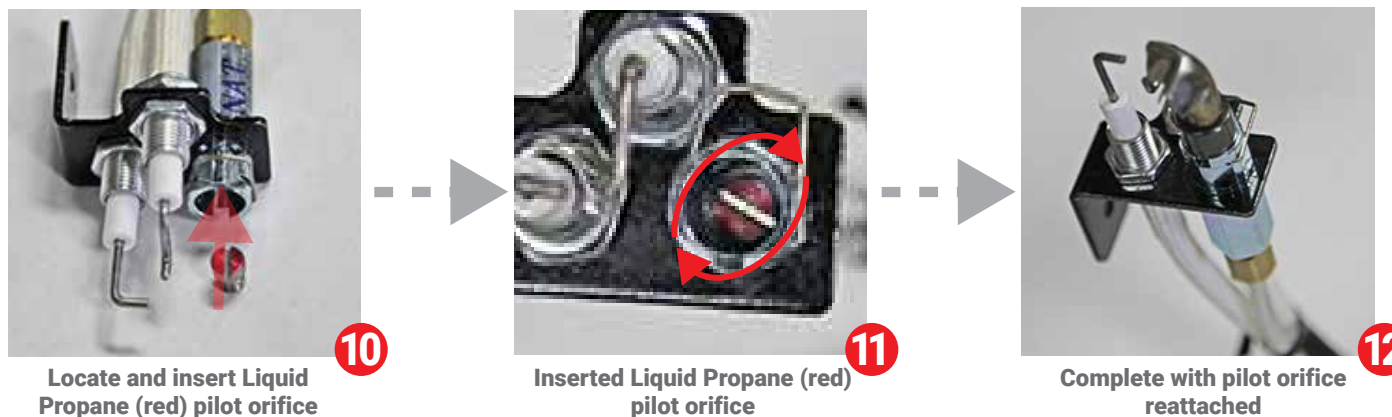
Removal of the NG pressure regulator ▶ Installation of the LP pressure regulator



Removal of the Natural Gas pilot orifice



Installation of the Liquid Propane pilot orifice



Converting Battery Electronic Burners from Natural Gas to Liquid Propane

1. Locate the gas control system located on the left-hand side of the burner. With an open-ended wrench disconnect the ½" Flex line connecting the gas control valve to the gas inlet of the burner.
2. With a pipe wrench and opened wrench remove the 90° brass elbow threaded into the merchant coupling, attached to the burner. DO NOT remove the merchant coupling. Using pipe compound and threat the brass air mixer & elbow cap onto the burner per figure 3. Make sure that the air mixer holes are not blocked to allow proper air flow.
3. Re-connect the ½" flex line connecting the gas control valve to the gas inlet.
4. Remove the black heat shield covering the valve and control module located on the left-hand side of the burner. Remove carefully in order to not damage any of the wires
5. Locate the Natural gas pressure regulator on the top of the gas control valve. With a Philips screwdriver, remove the (2) screws holding the silver & brass cap & remove the old rubber gasket. Replace the old pressure regulator with the NEW LP pressure regulator. First place the rubber gasket and then the silver/red pressure regulator. Screw tight and place the "THIS CONTROL HAS BEEN CONVERTED TO LP" sticker on the valve. Replace the black heat shield.
6. Located the pilot assembly attached to the top tube of the burner. Remove the set spring located on the back side of the pilot hood. Once the set spring is removed, pull up on the pilot hood completely removing it from the pilot assembly. With a flat head screwdriver remove the "blue" natural gas pilot orifice. Insert the "red" propane pilot orifice and tighten with the flat head screw driver. Replace the pilot hood back on the pilot assembly and replace the set spring.