



**GRAND**  **CANYON**  
**GAS** **LOGS**

**2024**  
**Indoor Products**  
[GrandCanyonGasLogs.com](http://GrandCanyonGasLogs.com)





# GRAND CANYON GAS LOGS

Our expertly crafted, ultra-realistic gas logs and larger than life flames are designed to elevate any indoor or outdoor environment, creating an unforgettable ambiance reminiscent of gathering around the campfire. Make your hearth the centerpiece of your home with Grand Canyon Gas Logs.

Established in 2014, Grand Canyon Gas Logs was created to bring handcrafted quality, hyper-realistic designs, and American-made manufacturing back to the hearth industry's gas log market - employing over 30 years of industry knowledge to foster innovation in an ever-evolving landscape. Earning the brand a highly-regarded reputation for their boutique practices and positioning Grand Canyon as the "craft beer" of the gas log industry.

Take a look at our full line of indoor and outdoor products to truly understand the Grand Canyon Gas Logs difference.





# Who Is Kyle?



## Meet Kyle.

He is a real-life person scanning Arizona's stunning countryside in search of the finest logs - not a mascot we created but rather a muse that inspired the foundation of Grand Canyon Gas Logs. His attention to detail and dedication to quality bring an unmatched realism not found within our industry.



## Table of contents

Log Species & Sizes.....	3-15
Fireplace Cannonballs.....	16-17
Vent Free Burners & Logs .....	18
Accessories .....	19
Gas Burners .....	20
Assembled Systems.....	21
Valves & Control Systems.....	22

Check Grand Canyon Gas Logs Price Guide for all item numbers and pricing.

Email [CustomerService@GrandCanyonGasLogs.com](mailto:CustomerService@GrandCanyonGasLogs.com) to request link to download GCGL Price Guide.

## REAL LOGS...FROM REAL PEOPLE



# Grand Canyon Gas Logs' Species & Sizes

## LAVA BURNER SERIES WITH GLOWFIRE™ LOGS

Grand Canyon Gas Logs Lava vented burner series is the **FIRST** gas log system to successfully integrate the burner tubes inside the logs known as the GlowFire™ log technology.

These one-of-a-kind masterpieces gives the look and the feel of the log on fire; because it is! Each log is individually orificed and ported allowing the fuel to flow out of the log presenting the most realistic gas log set on the market. The revolutionary technology presents ultra-realistic style and design to the traditional gas log set. The innovative technology also allows for increased efficiencies by using less BTUs and creating a fuller more robust flame effect. The ceramic refractory logs radiate more heat out into the room compared to a traditional refractory gas log set.

Available in 4 convenient sizes, gas specific construction, and available with either on/off or variable flame electronic controls. The Lava burner series and GlowFire™ log technology has created a platform for endless log styles and future configuration development.



## Lava Burner Series



Lava Burner Series - GlowFire™ Logs AZ Weathered Oak Charred 24"

- Install into any fireplace that is approved for burning wood
- Revolutionary GlowFire™ Log Technology
- Concealed valve and control system
- Gas Specific, non-field convertible
- 6v On/Off or Modulating Electronic Ignition System
- Low BTU's with fuller more robust flame
- Available in 18", 24", 30" and 36"



# Grand Canyon Gas Logs' Species & Sizes

## Lava Burner Series - GlowFire™ Logs



Lava Burner Series - GlowFire™ Logs AZ Weathered Oak Charred 18"



Lava Burner Series - GlowFire™ Logs AZ Weathered Oak Charred 30"



Lava Burner Series - GlowFire™ Logs AZ Weathered Oak Charred 24"



Lava Burner Series - GlowFire™ Logs AZ Weathered Oak Charred 36"

# Grand Canyon Gas Logs' Species & Sizes

Lava Burner Series - GlowFire™ Logs



Lava Burner with Glowfire™ Logs - Arizona Weathered Oak Charred 24"



# Grand Canyon Gas Logs' Species & Sizes

## Arizona Weathered Oak Collection

These logs were found in the mountains of the Northern Arizona forest. In fact, all of the logs that make up this collection were gathered from one tree that was hit by lightning more than 40 years ago.

The effects of the lightning strike created bulges, twisting and cracking in the wood which are unique to our Arizona Weathered Oak Collection.

Item # AWO##LOGS

## AZ Weathered Oak



Arizona Weathered Oak (AWO)  
Available in 18", 21", 24", 30", 36", 42", 48" and 60".  
Front View and See-Through.  
Burner compatibility 2 and 3 burner.



2-Burner Arizona Weathered Oak 18"



3-Burner Arizona Weathered Oak 30"



2-Burner Arizona Weathered Oak 21"



3-Burner Arizona Weathered Oak 24"



2-Burner Arizona Weathered Oak 60"  
Also available in 48"



2-Burner Arizona Weathered Oak 36"



3-Burner Arizona Weathered Oak 42"

# Grand Canyon Gas Logs' Species & Sizes

## JUMBO SERIES & JUMBO SLIMLINE SERIES

Our Jumbo Series matches our massive Jumbo burners with our hefty Jumbo Arizona Weathered Oak Logs. The 1" tines on the burner are a perfect complement to the 12" diameter of the Jumbo Arizona Weathered Oak front log. Big tines and big logs are not all this collection has to offer as massive flames are the final part of this 3 headed beast. Available in sizes 24" - 120" front view and see-through. Jumbo burners have a depth of 21" and the Jumbo Slimline burners are 18" deep.

Item # JUMBOAWO##LOGS

Item # JUMBOSLIMAWO##LOGS

## AZ Weathered Oak JUMBO



Jumbo-Burner - Jumbo Arizona Weathered Oak 36"



Jumbo-Burner - Jumbo Arizona Weathered Oak 60"



Jumbo-Burner - Jumbo Arizona Weathered Oak 60"



# Grand Canyon Gas Logs' Species & Sizes

## Arizona Juniper Collection

Found in the washes and valleys of the Northern Arizona terrain, much of the character of the natural wood comes from the rainy springs and hot summers causing exotic cracking and wild twisting in the wood. Our log hunters hiked the washes hand-picking each of the logs that make up the Arizona Juniper sets. Take notice of the detail in each one of the logs that feature deep cracking, pitting and natural wood decay only perfected by Mother Nature.

Item # AJ##LOGS



2-Burner Arizona Juniper 30"

## Arizona Juniper



Arizona Juniper (AJ)

Available in 18", 21", 24", 30", 36" and 42".

Burner compatibility 2 and 3 burner.

2-Burner Arizona Juniper 18"



2-Burner Arizona Juniper 21"



2-Burner Arizona Juniper 24"



2-Burner Arizona Juniper 36"



2-Burner Arizona Juniper 42"



3-Burner Arizona Juniper 18"



3-Burner Arizona Juniper 30"



3-Burner Arizona Juniper 36"



3-Burner Arizona Juniper 42"



3-Burner Arizona Juniper 21"



3-Burner Arizona Juniper 24"



3-Burner Arizona Juniper 24"



# Grand Canyon Gas Logs' Species & Sizes

## Arizona Western Driftwood Collection

Aptly named, this beautiful set of timber was conceived with one of the world's 7 natural wonders in mind - The Grand Canyon. This most recent addition to the company's line of hand-crafted gas logs resembles the natural terrain of the Grand Canyon along the sun baked banks of the Colorado River. Scorching summers and cool wet winters served as inspiration behind such detail. It features a washed-out, sun-bleached exterior against rich gray tones and bright white elements creating the backdrop for deep, cracking, splitting in-the-woods bark. We recommend the Western Driftwood log set as the perfect option for any transitional design.

Item # DRIFTWOOD##LOGS



Arizona Western Driftwood 36"

## Western Driftwood



2-Burner Arizona Western Driftwood 18"

Arizona Western Driftwood (WD)  
Available in 18", 21", 24", 30", 36" and 42".  
Front View and See-Through.  
Burner compatibility 2 and 3 burner.



2-Burner Arizona Western Driftwood 21"



2-Burner Arizona Western Driftwood 24"



2-Burner Arizona Western Driftwood 36"



2-Burner Arizona Western Driftwood 42"

# Grand Canyon Gas Logs' Species & Sizes

## Arizona Weathered Oak Charred Collection

This collection combines the detail and beauty from our native series and adds the extra dimension of an authentic charred look. Our log hunters hand-picked each of the logs and then burned the front logs right in half. Once burnt the logs are molded to capture the most realistic looking charred set on the market.  
Item # AWOC##LOGS

## AZ Weathered Oak CHARRED



2-Burner Arizona Weathered Oak Charred 18"

Arizona Weathered Oak Charred (AWOC)  
Available in 18", 24", 30", 36" and 42".  
Front View and See-Through.  
Burner compatibility 2 and 3 burner.



2-Burner Arizona Weathered Oak Charred 24"



2-Burner Arizona Weathered Oak Charred 30"



3-Burner Arizona Weathered Oak Charred 36"



3-Burner Arizona Weathered Oak Charred 42"



Arizona Weathered Oak Charred 30"



# Grand Canyon Gas Logs' Species & Sizes

## Quaking Aspen Collection

Here is Grand Canyon Gas Logs' signature birch set. This traditional birch log set balances the cream whites with the scarred black bark from the winter snows.

Item # ASPEN##LOGS

## Quaking Aspen



2-Burner Quaking Aspen 18"

Quaking Aspen (QA)

Available in 18", 24", 30", 36", 42", 48" and 60".

Front View and See-Through.

Burner compatibility 2 & 3 burner.



2-Burner Quaking Aspen 24"



2-Burner Quaking Aspen 30"



2-Burner Quaking Aspen 36"



2-Burner Quaking Aspen 42"



2-Burner Quaking Aspen 60"



Quaking Aspen 30"



# Grand Canyon Gas Logs' Species & Sizes

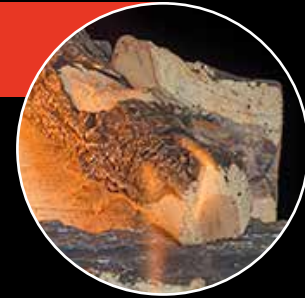
## Blue Pine Split Collection

These logs were found in the bark beetle ravaged forest of Northern Arizona. The infestation of beetles left behind acres upon acres of downed trees, however it created unbelievable wood character only captured in the Blue Pine Split log collection.

The deep grain pattern and gray highlights make this look like the wood was split right in half in your fireplace. Don't like the split side, reverse the log to showcase the fantastic Alligator bark.

Item # BPS##LOGS

## Blue Pine Split



Blue Pine Split (BPS)  
Available in 18", 24" and 30".  
Front View only.  
Burner compatibility 2 and 3 burner.



2-Burner Blue Pine Split 18"



2-Burner Blue Pine Split 24"



2-Burner Blue Pine Split 30"



3-Burner Blue Pine Split 30"



3-Burner Blue Pine Split 18"



3-Burner Blue Pine Split 24"

# Grand Canyon Gas Logs' Species & Sizes

## Kiva Collection

A Southwest favorite, the Kiva Collection has been found to be a very versatile burner system. Designed to fit Adobelite Kiva fireplaces, burners 18", 24" and 30" have actual overall widths of 12", 18" and 21". With an overall depth of 9" this burner packs a punch for its small stature.

Log options available are the Arizona Weathered Oak or the Arizona Juniper.

Item # AWO-KIVALOGS

Item # AJ-KIVALOGS

## Kiva



Kiva Arizona Juniper (AJ)

### KIVA (KIVALOGS)

Available in 18", 24" and 30".

Front View only.

Burner compatibility Kiva burner.



Kiva Arizona Weathered Oak (AWO)



Kiva Arizona Weathered Oak (AWO)



# Grand Canyon Gas Logs' Species & Sizes

## Fireplace Fiber Cannonballs

Simple yet modern elegance describe our new Cannonballs.

These fiber refractory balls look great sitting on a bed of our Lava Granules whether the flames are turned on or off.

Add extra dimension by stacking all 3 sizes (2", 4" or 6") together.

Available in Black (B), Gray (GY) & White (WHT).

Item # CB2-12-##

Item # CB4-8-##

Item # CB6-4-##

## Fireplace Cannonballs



Fireplace Fiber Cannonballs



Fireplace Fiber Cannonballs

Available in 2", 4", and 6".

Available in Black (BLK), Gray (GRY) & White (WHT).

## Linear Western Driftwood

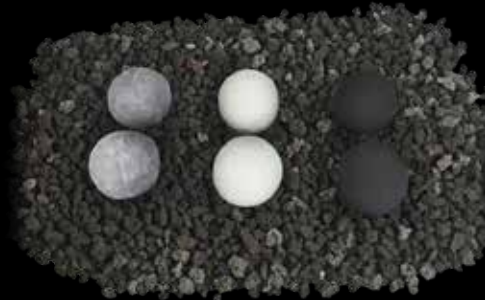
Linear Western Driftwood log set adds a transitional dimension to a linear fireplace. These uniquely crafted logs spread across the fireplace giving a wood pile effect.

Available in Linear Lengths 24" - 120"

Item # WD-LINEAR-##LOGS



Glass Burner with 24" Driftwood Logs



2" Cannonballs - Gray - White - Black



4" Cannonballs - Gray - White - Black



6" Cannonballs - Gray shown



As Seen On



On the Property's Brothers'  
Celebrity IOU Season II Episode  
with the Kardashian Family!

4" Cannonballs - Gray



# Grand Canyon Gas Logs'

## Species & Sizes

### Vent Free Series

The Vent Free burner system features hand cut and painted Aspen Birch, Weathered Oak, Red Oak, or Split Oak Logs and Grand Canyon Gas Logs New Vulcan Vent Free burner system. These logs were found deep in the Northern Arizona forest and feature a deep dark bark pattern with charred white highlights just like nature intended.

Burners available in 18" & 24/30"



Standard Millivolt with Burner & Remote



IPI Electric with Burner Puck  
Remote included with this  
Variable Electric model only.



Variable Control with Burner  
& Remote

## Vent Free



NEW 24" Aspen Birch Gas Logs



Realistic hand-painted charred logs



24" Red Oak Gas Logs



18" Weathered Oak Gas Logs



24" Split Oak Gas Logs



30" Split Oak Gas Logs

- All burners include a remote
- Individually cast & hand painted logs
- Listed for vented & ventless use
- Cement refractory with reinforced steel fiber

# Accessories

## 1/2" Reflective Glass Colors

1/2" Reflective Glass is sold in 10 pound clear plastic containers. Athena glass is designed for use in fire-pits and other fire features. When the glass is in a fire-pit or fire feature - Do not touch the glass as it is hot and will cause 3rd degree burns. Keep away from children.



**Poseidon Blue**  
Item # RFG-10-PB



**Adriatic Topaz**  
Item # RFG-10-AT



**Vesper Black**  
Item # RFG-10-VB



**Amber Diamond**  
Item # RFG-10-AG



**Krystallo Diamond**  
Item # RFG-10-KD



**Apollo Bronze**  
Item # RFG-10-AB



**Terra Copper**  
Item # RFG-10-TC

## Lava Rocks, Granules & Pebbles



**1" - 2" Lava Pebbles**  
Available in 50 lb. Bags  
Item # NL-3050



**2" - 3" Lava Pebbles**  
Available in 50 lb. Bags  
Item # NL-5080



**Lava Granules**  
Available in 10 lb. Bags  
Item # HP-B-GR-10



**Lava Rock**  
Available in 10 lb. Bags  
Item # HP-B-R-10

## Black Glowing Embers



**6 oz Bag**  
Item # GLE-6B

## Platinum Bright Embers



**1 Gram**  
Item # PEB-1

## Black Vermiclite



**6 oz Bag**  
Item # VEM-6

## Glowing Wire



**1 Gram**  
Item # GLW-1





# Grand Canyon Gas Logs' Gas Burners

Grand Canyon Gas Logs' burners are manufactured with American pride in the Heartland of the United States. Our 2 and 3 burner systems are ANSI certified from sizes 18" - 60" and all burners manufactured are factory tested to meet ANSI standards. Each burner is coated in a 100% ceramic based paint. Hard pipes are just some of the reasons Grand Canyon Gas Logs' burners stand out from the rest. With a lifetime indoor use warranty our burners are built to stand the test of time.



## Jumbo/Jumbo Slimline Burner



Available Sizes: 36" - 120"  
Jumbo = 21" Depth or Jumbo Slimline = 18" Depth  
Item # JUMBOBRNR-## Item # JUMBOSLIMBRNR-##

## 2-Burner



Available Sizes: 18", 21", 24", 30", 36",  
42", \*48" and \*60"  
Item # 2BRN-##

## 3-Burner



Available Sizes: 18", 24", 30", 36" and 42"  
Item # 3BRN-##

\* Height of a 3 burner

## Kiva Burner



Available Sizes: 18 (12"), 24 (18") and 30 (21")  
Item # KIVABRN-##

## 2-Burner See Through



Available Sizes: 18", 21", 24", 30", 36",  
42", 48" and 60"  
Item # 2BRN-ST##

\* Height of a 3 burner

## 3-Burner See Through



Available Sizes: 18", 21", 24", 30", 36" and 42"  
Item # 3BRN-ST##

## Glass Burner



Available Sizes: 18" - 60"  
Item # GLASSBRN-##/12-H or GLASSBRN-##/14-H

# Assembled Burners

**ASSEMBLED INDOOR 2 and 3 BURNERS**  
 Assembled burner systems feature factory tested and installed control systems. Tested to the ANSI standard, these assembled systems are a plug and play approach. Indoor use ONLY, 100% ceramic based paint. Construction with metal bar stock and burner pipes. All burner kits include burner, lava rock, black embers, flex line, damper clamp & vermiculite (LP ONLY). \*\* Gas Type (NG or LP)



## 2-Burner - Safety Pilot



Assembled burner natural gas with safety pilot system.  
 2BRN-##-\*\*\*-SP

## 3-Burner - Safety Pilot



Assembled burner natural gas with safety pilot system.  
 3BRN-##-\*\*\*-SP

## 2-Burner - Millivolt & Remote



Assembled burner natural gas with millivolt and remote system.  
 2BRN-##-\*\*\*-MVK-GCRK

## 3-Burner - Millivolt & Remote



Assembled burner natural gas with millivolt and remote system.  
 3BRN-##-\*\*\*-MVK-GCRK

## 2-Burner - Modulating Millivolt & Remote



Assembled burner natural gas with modulating millivolt and remote system.  
 2BRN-##-\*\*\*-MMVR

## 3-Burner - Modulating Millivolt & Remote



Assembled burner natural gas with modulating millivolt and remote system.  
 3BRN-##-\*\*\*-MMVR

## 2-Burner - Battery Electronic & Remote



Assembled burner natural gas with battery electronic and remote system.  
 2BRN-##-\*\*\*-MVKEI-GCRK

## 3-Burner - Battery Electronic & Remote



Assembled burner propane with battery electronic and remote system.  
 3BRN-##-\*\*\*-MVKEI-GCRK



# Grand Canyon Gas Logs'

## Valves & Control Systems

### Manual Valve



90K BTU Rating  
Item # MA

### Safety Pilot System



90K BTU Rating  
Item # SPQMKL or SPQMN

### High Capacity Safety Pilot System



142K BTU Rating  
Item # HCSPK-LP or HCSPK-N

### Millivolt System



82K Natural Gas BTU Rating  
110K Propane BTU Rating  
Item # MVQMKL or MVQMN

### High Capacity Millivolt System



240K Natural Gas BTU Rating  
320K Propane BTU Rating  
Item # HCMVQMKL or HCMVQMN

### Modulating Millivolt System



120K (NG & LP) BTU Rating  
Item # MMVKR-LP or MMVKR-NG

### Battery Electronic



120K Natural Gas BTU Rating  
140 K Propane BTU Rating  
Item # MVKEIKL or MVKEIKN

### Grand Canyon Remote Kit



85K BTU Rating  
Item # GCRK

### Electronic Ignition System Box



200K Natural Gas BTU Rating  
320K Propane BTU Rating  
Item # EIS, EIS-LP, EIS-10 or EIS -LP-10

N = Natural Gas  
LP = Liquid Propane



**GRAND  
GAS** **CANYON  
LOGS**

**RPG BRANDS**

RPG BRANDS FAMILY OF COMPANIES

MODERN  
ELECTRIC

FLAMES  
FIREPLACES

WILDFIRE  
OUTDOOR LIVING

GRAND  
GAS

CANYON  
LOGS

**[www.GrandCanyonGasLogs.com](http://www.GrandCanyonGasLogs.com)**

**PHONE: 602-344-4217**

**[customerservice@grandcanyongaslogs.com](mailto:customerservice@grandcanyongaslogs.com)**

*Copyright © 2024 RPG Brands and Grand Canyon Gas Logs. All rights reserved.  
Products and specifications subject to change without notice.*





CELEBRATING  
10 YEARS  
2014 - 2024

GRAND  CANYON  
GAS LOGS

**2024**  
Outdoor Products  
[GrandCanyonGasLogs.com](http://GrandCanyonGasLogs.com)





# GRAND CANYON GAS LOGS

Our expertly crafted, ultra-realistic gas logs and larger than life flames are designed to elevate any indoor or outdoor environment, creating an unforgettable ambiance reminiscent of gathering around the campfire. Make your hearth the centerpiece of your home with Grand Canyon Gas Logs.

Established in 2014, Grand Canyon Gas Logs was created to bring handcrafted quality, hyper-realistic designs, and American-made manufacturing back to the hearth industry's gas log market - employing over 30 years of industry knowledge to foster innovation in an ever-evolving landscape. Earning the brand a highly-regarded reputation for their boutique practices and positioning Grand Canyon as the "craft beer" of the gas log industry.

Take a look at our full line of indoor and outdoor products to truly understand the Grand Canyon Gas Log difference.



Cover photo  
As Seen On



**HGTV**

On the HGTV  
Brother vs Brother Season 8  
The Perfect Place to Relax on a  
Cool Evening





Grand Canyon Gas Log  
Web Site

# Who Is Kyle?



## Meet Kyle.

He is a real-life person scanning Arizona's stunning countryside in search of the finest logs - not a mascot we created but rather a muse that inspired the foundation of Grand Canyon Gas Logs. His attention to detail and dedication to quality bring an unmatched realism not found within our industry.



## Table of contents

- Log Species & Sizes..... 3-4
- Outdoor Burners, Assembled Systems & Pans ..... 5-6
- Fire Table Collection ..... 7
- Fire Bowl Collection ..... 8
- Fire Table Collection - Propane ..... 9
- Accessories -  
Lava Rock, Fire Glass, River Stone, Cannon Balls ..... 10

Check Grand Canyon Gas Logs Price Guide for all item numbers and pricing .  
Email [Customerservice@GrandCanyonGasLogs.com](mailto:Customerservice@GrandCanyonGasLogs.com) to request link to download Price Guide.

# REAL LOGS...FROM REAL PEOPLE



# Grand Canyon Gas Logs' Species & Sizes

Found across the Arizona terrain, Grand Canyon Gas Logs feature unique life like characteristics throughout all our styles. From the unique wood decay, cracking and splitting found in the Arizona Juniper and Western Driftwood to the deep rich bark and natural highlights in the Arizona Weathered Oak and Arizona Weathered Oak Charred our logs make you feel like you have chopped wood in your fireplace. Take notice to the detail in each one of these individually cast, hand painted works of art.

These logs are available in multiple arrangements, front view and see through with sizes ranging from 18" - 120".

Burners shown are black indoor burners for displaying logs only.  
All outdoor burners are made of 304 Stainless Steel.



## AZ Weathered Oak



Shown: Arizona Weathered Oak 30"



Arizona Weathered Oak (AWO) available in 18", 21", 24", 30", 36", 42", 48" and 60".  
Burner compatibility 2 & 3 burner.  
Item- AWO##LOGS

## Arizona Juniper



Shown: Arizona Juniper 30"



Arizona Juniper (AJ) available in 18", 21", 24", 30", 36" and 42".  
Burner compatibility 2 & 3 burner.  
Item- AJ##LOGS

## Quaking Aspen



Shown: Quaking Aspen 30"



Quaking Aspen (ASPEN) available in 18", 24", 30", 36", 42", 48" and 60".  
Burner compatibility 2 & 3 burner.  
Item- ASPEN##LOGS



## AZ Weathered Oak **CHARRED**



Shown: Arizona Weathered Oak Charred 30"



Arizona Weathered Oak Charred (AWOC) available in 18", 24", 30", 36" and 42".  
Burner compatibility 2 & 3 burner.  
Item- AWOC##LOGS

## Fire Pit Stacks



Shown: Tee Pee Stack AW0 30/36"



Fire Pit Stack available in 18", 24", 30", 36", and 48".  
Available in Tee Pee Stack, Flat Stack & Round Tall Stack.  
Item #'s See Price Guide.

## Blue Pine Split



Shown: Blue Pine Split 30"



Blue Pine Split (BPS) available in 18", 24" and 30".  
Burner compatibility 2 & 3 burner.  
Item- BPS##LOGS

## Linear Driftwood



Shown: Linear Western Driftwood 24"



Linear Western Driftwood (DW) available in 24", 36", 48", 60", 72", 84", 96", 108" and 120".  
Item- WD-LINEAR-##LOGS

## Western Driftwood



Shown: Western Driftwood 30"



Western Driftwood (DRIFTWOOD) available in 18", 21", 24", 30", 36" and 42". Burner compatibility 2 & 3 burner.  
Item- DRIFTWOOD##LOGS

## AZ Weathered Oak **JUMBO**



Shown: Jumbo Arizona Weathered Oak 48"



Jumbo Arizona Weathered Oak (JUMBOAWO) available in 36", 42", 48" and 60". Jumbo Slimline available 24" - 120". Only 21" deep burners.  
Item- JUMBOAWO##LOGS

# Grand Canyon Gas Logs' Outdoor Burners & Pans

Our gas log burners are manufactured in the Heartland of America using high-quality stainless-steel components and a fully welded frame.

All outdoor Burners and Fire Rings are built with 304 Stainless Steel and carry a lifetime warranty when installed inside or outside.



## 2 Burner Stainless Steel



Available Sizes: 18", 21", 24", 30", 36",  
42", 48"\* and 60"\*

\* Height of 3-Burner

Front View & See-Through Item- 2BRN-##-SS

## 3 Burner Stainless Steel



Available Sizes: 18", 21", 24", 30", 36" and 42"

Front View & See-Through

Item- 3BRN-##-SS

## Glass Stainless Steel



Available Sizes: 18", 24", 30", 36", 42",  
48" and 60"



**Rectangle Drop-in Pan with "H" Burner**



Available in: 24" x 8"  
30" x 10", 36" x 12", 48" x 14"  
Item- DIP-REC-##

**Linear Drop-in Pan with "T" Burner**



Available in: 36" x 6"  
48" x 6", 60" x 6", 72" x 6"  
Item- DIP-LN-##

**Round Drop-In with Fire Ring Burner**



Available in: 19" Pan with 12" Ring Burner  
25" Pan with 18" Ring Burner  
31" Pan with 24" Ring Burner  
Item- DIP-RD-##

**Round Flat Stack Burner\***



Available Sizes: 18", 24", 30", 36" and 48"  
\*Pilot assembly shown, not included.  
Item- RFS-##-(NG or LP)

**Round Tall Stack Burner\***



Available Sizes: 18", 24", 30", 36" and 48"  
\*Pilot assembly shown, not included.  
Item- RTS-##-(NG or LP)

**Tee-Pee Stack Burner\***



Available Sizes: 24", 30", 36" and 48"  
\*Pilot assembly shown, not included.  
Item- TPS-##-(NG or LP)

**Tee-Pee Burner**



Available Sizes: 24", 30", 36" and 48"  
Item- OTPB-##

**Orifice**



Natural Gas & Liquid Propane Orifice  
Item- OAS-(NG or LP)

**3-Spoke Fire Ring Burner**



Available Sizes: 6", 12", 18", 24", 30", 36" and 48"  
Note: 30", 36" & 48" fire rings have a 3/4" gas inlet  
Item- FRS##

**"H" Style Burner**



Available Sizes: 12", 18", 24", 30",  
36", 48", 60" and 72"  
Item- HBSS##

**"T" Style Burner**



Available Sizes: 36", 48", 60" and 72"  
Item- TBSS##

**Weather Smart**



WiFi Controller  
Item- WBPB-12

**Key Valve**



Item- CP.910.CR

**Install Kit**



Install Kit: Small  
Item- KIT-(SM or LG)

**All Weather Beater Ignition System**



Item- WBECS

# Grand Canyon Gas Logs' 18" Hard Plumbed Fire Table Collection

The Fire Table collection is constructed from GFRC (Glass Fiber Reinforced Concrete) with color dyed through in through & molded off our proprietary designs. Our fire-table are designed to complete your outdoor entertaining experience featuring angled side, over 10" of table top space for plates & beverage glasses and ambiance flame effect for adding to the mood or taking the chill off a cool night.

The rectangular table comes in 18" (Natural Gas or Liquid Propane) features a 36" linear drop-in burner & the Square and Round feature a 19" drop-in pan with 12" burner. 5 stunning unique colors. For the media add one of seven unique 1/2" Reflective glass colors, Lava Rock, Tumbled Lava Stones, Arizona Weathered Oak or Western Driftwood fire pit logs

## GFRC (Glass Fiber Reinforced Concrete) COLORS



Charcoal

White

Rust

Gray

Bone



Item- OSQRFT-484818-###-NG/LP

### Square Fire Table

Dimensions: 48" x 48" x 18" (Shown in White)



Item- OORNDFT-444418-###-NG/LP

### Round Fire Table

Dimensions: 48" x 48" x 18" (Shown in Charcoal)



Item- ORECFT-603018-###-NG/LP

### Linear Fire Table

Dimensions: 60" x 30" x 18" (Shown in Gray)

Also available in 72" x 30" x 18" Item- ORECFT-723018-###-NG/LP



# Grand Canyon Gas Logs'

## Fire Bowl Collection

The Fire Bowl collection is constructed from GFRC (Glass Fiber Reinforced Concrete) with color dyed through in through & molded off our proprietary designs. Our fire bowls are designed to complete your outdoor entertaining experience. All bowls are available in Natural Gas or Liquid Propane, match lit or Hot Surface Electronic Ignition & 3 stunning unique colors. For the media add one of seven unique 1/2" Reflective glass colors, Lava Rock, Tumbled Lava Stones, Arizona Weathered Oak, Aspen Birch or Western Driftwood fire pit logs.

Offered in 2 sizes: 39" diameter x 13" deep or 48" diameter x 16" deep.



Item- FB3913-R-(NIP)-###  
FB4816-R-(NIP)-###

\* Options: Log Sets, Lava Rock, Reflective Glass, River Stone are additional costs.

### GFRC (Glass Fiber Reinforced Concrete) COLORS



Charcoal

White

Rust

Gray

Bone



Aspen Tee Pee Log Set w/Lava Rock\*  
(Shown in White)



AZ Weathered Oak Log Set w/Lava Rock\*  
(Shown in Charcoal)



Western Driftwood Log Set w/Lava Rock\*  
(Shown in White)

# Grand Canyon Gas Logs' 24" Propane Fire Table Collection



The Fire Table collection is constructed from GFRC (Glass Fiber Reinforced Concrete) with color dyed through in through & molded off our proprietary designs. Our fire-table are designed to complete your outdoor entertaining experience featuring angled side, over 10" of table top space for plates & beverage glasses and ambiance flame effect for adding to the mood or taking the chill off a cool night.

The rectangular table comes in 24" (Propane) height and features a 36" linear drop-in burner, Hot Surface Electronic Ignition & available in 5 stunning unique colors. For the media add one of seven unique 1/2" Reflective glass colors, Lava Rock, Tumbled Lava Stones, Arizona Weathered Oak or Western Driftwood fire pit logs



24" Fire Table (Gray) - Propane  
Shown with optional glass flame windguard  
60" table - Item# ORECFT-603024-###-LP  
72" table - Item# ORECFT-723024-###-LP

## GFRC (Glass Fiber Reinforced Concrete) COLORS



Charcoal White Rust Gray Bone



Easy Use Controls - Flame control & igniter



Optional - Glass Flame Windguard



Easy Access Propane Tank Door (24" Propane Table)





# Accessories

## 1/2" Reflective Glass Colors

1/2" Reflective Glass is sold in 10 pound clear plastic containers. Athena glass is designed for use in fire-pits and other fire features. When the glass is in a fire-pit or fire feature - Do not touch the glass as it is hot and will cause 3rd degree burns. Keep away from children.



**Poseidon Blue**  
Item- RFG-10-PB



**Adriatic Topaz**  
Item- RFG-10-AT



**Krystallo Diamond**  
Item- RFG-10-KD



**Vesper Black**  
Item- RFG-10-VB



**Apollo Bronze**  
Item- RFG-10-AB



**Terra Copper**  
Item- RFG-10-TC



**Amber Diamond**  
Item- RFG-10-AG

## Lava Rocks, Granules & Pebbles



**Lava Rock**  
Available in 10 lb. Bags  
Item- HP-B-R-10



**Lava Granules**  
Available in 10 lb. Bags  
Item- HP-B-GR-10



**1" - 2" Lava Pebbles**  
Available in 50 lb. Bags  
Item- NL-3050



**2" - 3" Lava Pebbles**  
Available in 50 lb. Bags  
Item- NL-5080

## Optional Fire-Pit Gas Log Sets

18" - 24" 9 pcs. Set or 30" - 36" 16 pcs. Set



**Arizona Weathered Oak Gas Log Set**  
Item- FPAWO-18/24



**Western Driftwood Gas Log Set**  
Item- FPDW-18/24



**Aspen Birch Gas Log Set**  
Item- FPASP-18/24

## Fiber Cannon Balls



**2" Cannon Balls**  
Box of 12  
Black, Dark Gray or Silver  
Item- CB2-12-##



**4" Cannon Balls**  
Box of 8  
Black, Dark Gray or Silver  
Item- CB4-8-##



**6" Cannon Balls**  
Box of 4 - Black, Dark Gray or Silver  
Item- CB6-4-##



# GRAND CANYON GAS LOGS

**RPG BRANDS**

RPG BRANDS FAMILY OF COMPANIES

MODERN FLAMES  
ELECTRIC FIREPLACES

WILDFIRE  
ELECTRIC FIREPLACES

GRAND CANYON  
GAS LOGS

[www.GrandCanyonGasLogs.com](http://www.GrandCanyonGasLogs.com)

PHONE: 602-344-4217

[customerservice@grandcanyongaslogs.com](mailto:customerservice@grandcanyongaslogs.com)

*Copyright © 2024 RPG Brands and Grand Canyon Gas Logs. All rights reserved.  
Products and specifications subject to change without notice.*