

# WEATHERSHIELD® SELECTION & SIZING GUIDE

## Selection and Sizing Guide

Installing the correct size WeatherShield® model is essential for proper operation. Adapters are required for some installations. Follow state code requirements relative to spark arresters.

The model number found on the top of each unit and on the shipping carton corresponds to the unit's size; i.e., WSA-6 corresponds to a nominal 6" pipe dimension of the WeatherShield®.

**Important:** WeatherShield® chimney caps fit inside round flues or inside Adapter collar. Adapter instructions are included separately with the Adapter and may also be found on the next page.



**WeatherShield® Model WSA, WSC, and WSM**

Protects chimneys from infiltration of rain, snow, debris, and animals. Designed for installation on other than air-cooled chimneys.



**WeatherShield® Model WSA-TDW, WSC-TDW, and WSM-TDW**

Protects chimneys from infiltration of rain, snow, debris, and animals. Designed for installation on air-cooled chimneys.

### Selection Guide WeatherShield®

Chimney Description				Required	
Material	Flue Shape	Construction	Insulation	Model	Adapter
Metal	Round ●	Single Wall	None	WSA	Not Required
		Double Wall	Solid Pack	WSA	
			Air Cooled	WSA-TDW	
		Triple Wall	Air Cooled	WSA-TDW	
Masonry	Round ●	N/A	N/A	WSA	Not Required
	Square ■	Masonry	N/A	WSA Adapter Required	AD
	Rectangular ▣				

### Sizing Guide for WeatherShield®

Appliance	Flue Shape		Important Sizing Guide Instructions
• Stove • Insert • Furnace	●		Must not be less than size of appliance smoke outlet
	■	▣	Must not be less than size of appliance smoke outlet
• Fireplace	●		The effective area of flue and chimney cap should not be less than 10% of the front opening area of the fireplace. "The effective area" is the area of the inscribed circle.
		▣	

#### Adapter required for square or rectangular flues

- Do not install an undersize chimney cap. • Do not install unit on undersize chimney.
- Minimum flue areas for appliances should conform to manufacturer recommendation (usually the size of smoke outlet on appliance). • Minimum effective flue areas for masonry fireplaces must not be less than 10% of front opening area of fireplace (.10 x width x height).
- Local Building Code Requirements: All warranties for ICP chimney products are voided where installations do not conform to local building code requirements.

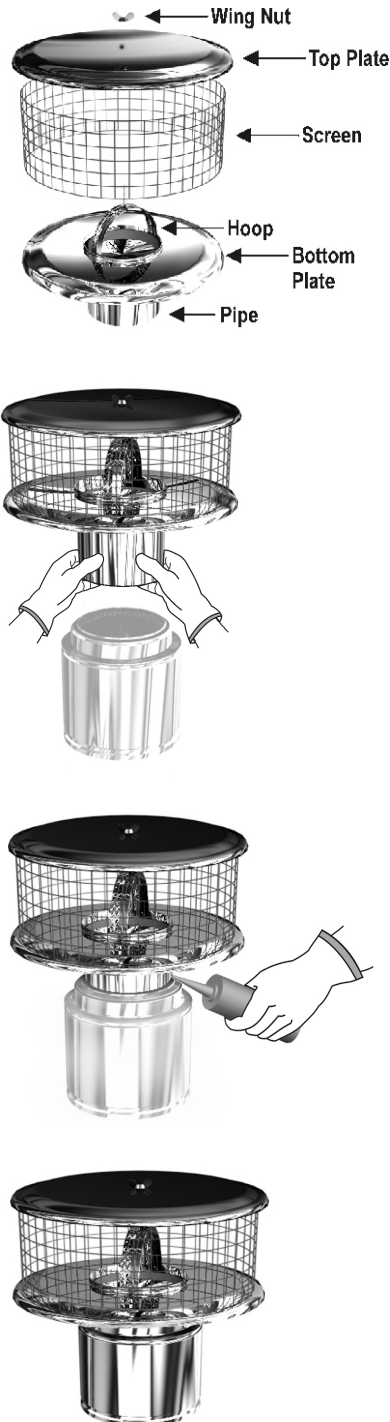


Improved Consumer Products, Inc.

(508) 695-7000 508-695-4209 (fax) www.chimneycaps.com

# WEATHERSHIELD® INSTALLATION INSTRUCTIONS WSA

## Instructions for installing WeatherShield® Model WSA on round flues other than air-cooled:



The **WeatherShield®** chimney cap installs quickly, easily, and securely. Follow applicable state code requirements relative to spark arresters.

### STEP 1. ASSEMBLE

The **WeatherShield®** is ready to install.

a.) Move hoop upwards to vertical position and remove wing nut. b.) Center screen on bottom plate. c.) Position top plate so screw at top of hoop passes through center hole of top plate. d.) Secure with wing nut as shown.

### STEP 2. FIT INSIDE FLUE

**WeatherShield®** chimney caps spring fit inside round metal and masonry flues. Squeeze bottom of **WeatherShield®** and push down into flue to assure snug fit.

### STEP 3. APPLY WATERTIGHT SEAL.

Apply thin film of silicone caulking (not furnished, but readily available at local home centers) to seal joint between **WeatherShield®** and top of chimney.

### STEP 4. FINAL POSITIONING

Push **WeatherShield®** down firmly into chimney section to make sure final connection is tight and secure.

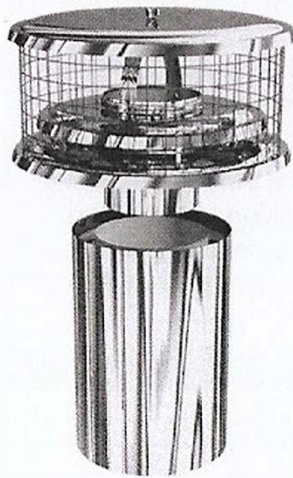
Instructions for installing Model WSA on rectangular or square flues continued on next page.

**icp**

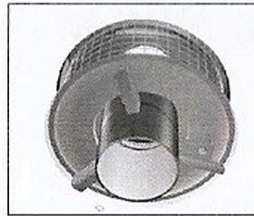
Improved Consumer Products, Inc.

(508) 695-7000 508-695-4209 (fax) [www.chimneycaps.com](http://www.chimneycaps.com)

## Instructions for installing WeatherShield® Model WSA-TDW on round air-cooled flues:



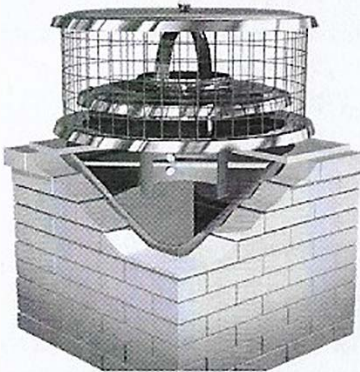
**STEP 1. FOLLOW STEPS 1-3 ON  
WSA INSTALLATION PAGE. DO  
NOT BEND OR ADJUST SPACERS**



Underside of cap  
showing three  
spacers.

**Do not bend or  
adjust these  
spacers.**

The three spacers located on the underside of all TDW models maintain ventilation space between bottom of chimney cap and top of chimney. This is essential for uninterrupted air flow through cooling channels in air-cooled chimneys. Altering these spacers on any TDW model WeatherShield®, Vacu-Stack®, StormShield® or other ICP chimney cap may result in fire.



**Instructions for installing  
WeatherShield® model WSA  
on rectangular or square flues**

**STEP 2. USE THE ADAPTER FOR  
SQUARE/RECTANGULAR CHIMNEYS.**

An optional adapter is required for WeatherShield® installations on square and rectangular chimneys and must be purchased separately. Then follow Steps 1-3 on preceding page. See next page for detailed installation instructions.

# icp

Improved Consumer Products, Inc.

(508) 695-7000 508-695-4209 (fax) [www.chimneycaps.com](http://www.chimneycaps.com)

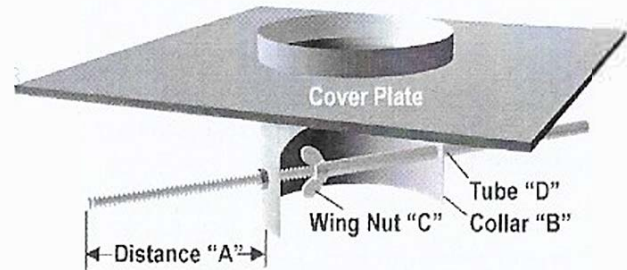
# WEATHERSHIELD® MASONRY ADAPTER INSTALLATION

**A masonry adapter is required for installation of a WeatherShield® on square and rectangular chimneys.**

## STEP 1. ASSEMBLE ADAPTER

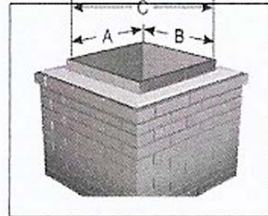
Identify all stainless steel parts: pipe with adapter plate, one threaded rod, one 1/2" diameter tube, one wing nut, two hex nuts, one flat washer, 2 lock washers.

Insert the threaded rod assembly through the two holes at bottom of adapter collar "B."



## STEP 2. MEASURE

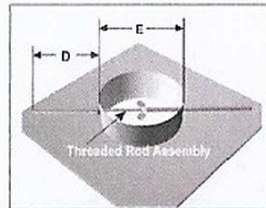
Measure inside of chimney opening "A" & "B" and diagonal distance "C." Adapter fastens to inside of chimney flue. The shortest dimension of "A" or "B" determines maximum adapter size that may be installed. Cover plate must be large enough to cover chimney opening.



## STEP 3. ADJUST THREADED ROD

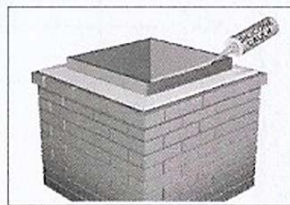
Adjust threaded rod so it projects distance "D" from side of adapter collar. "D" equals one-half times the difference between "C" (from Step 2) and collar diameter "E."

$$D = 1/2 \times (C - E)$$



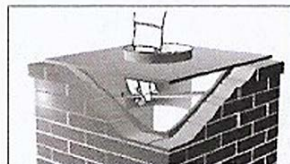
## STEP 4. PREPARE FLUE TOP

Brush clean top of flue and apply a bead of silicone caulking (available from most hardware stores and home centers).



## STEP 5. POSITION ADAPTER

Position adapter on flue with fixed end of threaded rod touching on inside corner of flue. Reach into collar and turn wing nut clockwise until tube firmly grips opposite corner of flue. Do not over tighten.



## MASONRY ADAPTER Model AD

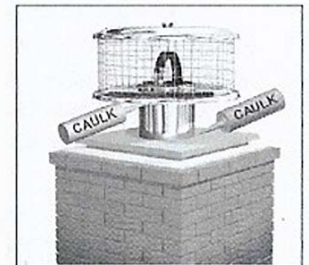
## STEP 6. SEAL COVER PLATE TO ATTACHED COLLAR

Apply a bead of silicone caulking at the location where the collar connects to the cover plate.



## STEP 7. ATTACH CHIMNEY CAP

Insert the WeatherShield® into the collar. Seat firmly and seal top joint with silicone caulking.



**CAUTION:** Do not undersize. The size (area) of the chimney cap must not be less than the size of the appliance **smoke outlet**. For fireplaces, the size (area) must not be less than 10% of the front opening of the fireplace. See Selection and Sizing Guide.

**icp**

Improved Consumer Products, Inc.

## Lifetime Limited Warranty

ICP will repair, or at its option replace any of its product that fail because of defect(s) in material or workmanship. This warranty excludes defects, malfunctions and/or failures which are caused by unauthorized repairs, modifications or improper installation.

The warranty is limited to the original owner & installation. Proof of purchase must accompany returned merchandise.

ICP shall not be liable for consequential or incidental damages.

Some states do not allow limitations to implied warranties so the above limitations or exclusions may not apply. This warranty acknowledges that the consumer has specific legal rights and other rights that vary from state to state.



IMPROVED CONSUMER  
PRODUCTS INC.

P. O. Box "B", Attleboro Falls, MA 02763  
(508) 695-7000 • FAX (508) 695-4209  
[www.chimneycaps.com](http://www.chimneycaps.com)



## INSTRUCTIONS FOR RETURNING MERCHANDISE

### FOR MERCHANDISE DAMAGED IN TRANSIT

- Retain product in original damaged package
- Describe extent of damage on freight bill
- File claim for damages with the freight carrier
- Notify ICP, Inc. for return authorization number if merchandise is to be returned to ICP

### FOR DEFECTIVE MERCHANDISE Other than damaged in transit

- 1) Notify ICP for a return authorization number. ICP will issue a UPS call tag
- 2) UPS will pick up merchandise. If possible please package in original container.
- 3) Merchandise will be repaired or replaced at ICP's discretion
- 4) Defective items may only be returned for repair/replacement not for credit



IMPROVED CONSUMER  
PRODUCTS INC.

P. O. Box "B", Attleboro Falls, MA 02763  
(508) 695-7000 • FAX (508) 695-4209  
[www.chimneycaps.com](http://www.chimneycaps.com)

